

More than Gifts

End of Year Experience / 2024



be Unique



Product, people, planet

By creating more products with recycled materials, we reduce waste and give old materials new life while offering impactful and budget-friendly options. Boost your brand recognition with stylish personalised gifts.



PRODUCT

Responsible sourcing and production

All products are produced in a responsible way and comply with the requirements under European laws and regulations. Choosing more sustainable materials has been an essential factor during the development of this new collection.



PEOPLE

Social responsibility

During production and printing we focus on creating a safe and positive working environment. All items are well constructed, tested and produced with compliant and safe materials.



PLANET

Sustainable solutions and sustainable printing

By strongly reducing the use of virgin plastic and rethinking the most efficient way to pack the goods, both individually and for onward distribution, we can reduce waste and influence our environmental footprint. Our printing process requires the safe use of all production inputs, such as chemicals and the control of all production outputs and emissions.



MO2371

MO2383

MW1102

CX1551

MO6847

MO9846

End of Year Experience 2024



04 Business Elegance

Business bags, power banks, wireless chargers and mobile devices.

86 Stylish Apparel

Hoodies, lightweight jackets and more.

34 Lifestyle Experience

Bottles, mugs, tumblers, lunchboxes and kitchenware.

98 Daily Living

Candles, blankets, games, daily tools and more.

64 Outdoor Experience

Outdoor backpacks, umbrellas and beanies.

112 A Seasonal Touch

Seasonal apparel, accessories and decorations.

The pictures of the items reproduced in our catalogue are not contractual. We reserve the right to change without notice the product and packaging specifications or colours of any item mentioned in this catalogue

152 Pictograms
Colour codes
Numerical product index
Printing information
Printing techniques



MO2284 › 18

MO2286 › 75

MO2275 › 17

MO2315 › 37

Business Elegance



With our newest collection, build a sophisticated brand that will enhance productivity and efficiency. From tools to help get you more organised matched with stylish and functional accessories, browse endless ways to create an inviting and collaborative atmosphere.





Start the day with your mobile fully charged

This device is designed to simplify your life and keep you connected. This 15W wireless charging device has an integrated speaker with an ambient light alarm clock, both stylish and functional.



Tuono MO2378

- A Night lights
- B Wireless speaker in 5W
- C Alarm clock
- D Wireless charger 15W



06



Tuono MO2378



4-in-1 wireless 15W charging 5W speaker in ABS with weather station and ambient light. Alarm clock. Time and temperature display. Built-in Li-Ion battery: 1200 mAh. Playing time approx. 7 hours. **Size** 20x9,8x6,4 cm **Print technique** Pad printing,DL,D01



06



Luce MO2299

Recycled ABS and RPET LED alarm clock. Display calendar year only in alarm mode. Including an adjustable ambient light. Operated by 3 AA (not included) battery. **Size** 9,9x9,9x4,2 cm **Print technique** Pad printing,DL,D01



MO6847



MO8117



MO2281



MO2309



Pandu MO2281



Wireless charger and desk organizer in bamboo with phone stand, 3 pen holders and foldable RPET mouse mat. Output: DC 9V/1.67A (15W). Compatible with all Qi enabled devices such as latest Androids, iPhone® 8, X and newer. **Size** 20x26x2.2 cm **Print technique** Laser engraving,S



06



13



41



03



03

Bool MO6847 •  

5.0 wireless speaker in RPET casing with bamboo detail on top.
 1 Rechargeable Li-ION 300 mAh battery included. Includes an SD card
 port and an AUX/ USB cable. Output data: 3W, 3 Ohm and 5V. Playing time
 approx. 3h. **Size** Ø6,1x5,3 cm **Print technique** Round screen printing ,L,P

Elegant Powerbanks



Power52c MO2279



Power bank 5000 mAh in recycled ABS. Capacity for smartphone use, Output: 1 x Type-C, 2 x Type-A & 1 x Type-B. Input: 2-in-1 Type C & Type-A. **Size** 9,9x6,2x1,5 cm
Print technique Pad printing, D01, DL



MO2279

MO2332

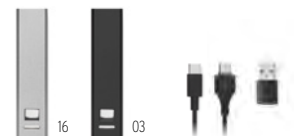




Powerbanc MO2342



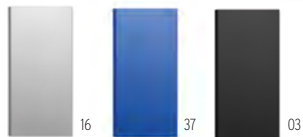
Power bank 2600 mAh in bamboo case. Capacity for smartphone, output current DC5V/2A. Including USB Type-C charging cable with Type-A adaptor. In/Output: USB Type-C. **Size** 10,2x2,5x2,5 cm **Print technique** Pad printing,L,PD



Poweraluc MO2374



Power bank 2600 mAh in recycled aluminium case. Capacity for smartphone use, out put current DC5V/2A. Including USB Type-C charging cable with Type-A adaptor. In/Output: USB Type-C. **Size** 9,5x2,1x2,1 cm **Print technique** Pad printing,L,PD



Powerflat8c MO2340



Power bank 8000 mAh in recycled aluminium. Capacity for smartphone use, output current DC5V/2A. Including USB Type-C charging cable. In/Output: USB Type-C. **Size** 7,5x15,2x0,9 cm **Print technique** Pad printing,L,PD



Powerplus MO2375



Wireless 15W charging 5000 mAh power bank in recycled aluminium. Input: Type-C. Output: 1 x Type-C & 1 x Type-A. Compatible latest Androids, iPhone® 8, 8S and X and newer. **Size** 12x6,5x0,9 cm **Print technique** Pad printing,L,DL,D01,PD



MO2275

MO9242

MO2332

MO2389



03

Fawtt MO2389



Foldable wireless charger 15W with magnetic phone stand
 in 58% recycled polyester and 42% PU. **Size** 11,4x6,5x1,3 cm
Print technique Pad printing,S

Functional cables and chargers



40



Versa MO2150



3-in-1 charging cable with assorted connectors. Presented in acacia wood box. Type-C to Type C cable, C to USB-A, C to micro-B, C to Lightning connectors. **Size** 9,6x6,5x2,1 cm **Print technique** Pad printing,D01,DL,L



03



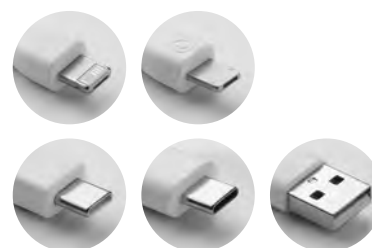
Current MO2294



4 ports USB hub in recycled aluminium. 3 USB-A + 1 Type-C. Input: 2-in-1 Type-C & Type-A. Cable length: 19 cm. **Size** 1,7x7x9,5 cm **Print technique** Pad printing,DL,D01



40



Clauerc MO2295



Bamboo key ring with phone stand functionality and integrated charging cable. Input: 2-in-1 Type-C & Type-A. Output: Type-C and micro-B (2 in 1 pin). **Size** 2,7x1,6x1,95 cm **Print technique** Pad printing,L,DL,D01



MO9178



MO2271



MO2326

Making travelling convenient

Enhance your travels with practical on the go accessories. Make every trip seamless and productive with these essential tools. Manage your schedule effortlessly with our smartwatch, enjoy your favorite drink on the go with our branded tumbler, focus on work with noise-cancelling headphones, and keep track of your belongings with our smart locator. Travel smarter, work better.

MO9178 › 18 20 inch hard-shell trolley in ABS

MO2271 › 17 Smart wireless health watch

MO2326 › 49 Double wall tumbler 160 ml

MO2275 › 17 ANC foldable headphones

MO2277 › 17 Smart Apple® Find My locator



MO2275

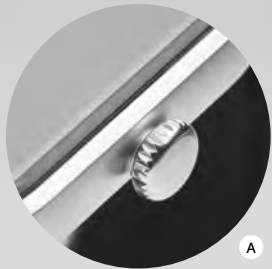


MO2277

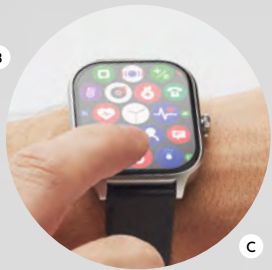


New smart watch with new features

This 4.0 wireless smartwatch keeps track of all your daily activities such as sedentary reminder, heart rate, blood oxygen or your sleeping monitor. As well as message alert or incoming calls and calendar notifications. The perfect accessory device for daily use!



A



C



E

- A Zinc alloy outer casing.
- B Quick access menu.
- C Vibration alert.
- D Full touch screen 240x296 pixels.
- E Charging time around 2hr.

MO2271



Irto MO2271

4.0 wireless smart health watch in zinc alloy with silicone strap. 2.01 inch touch LCD display. Rechargeable Li-Pol 90 mAh battery. Requires a free app (HryFine available in both iOS and Android). **Size** 2,5x4x1,2 cm **Print technique** Pad printing,S



Arta MO2270

4.0 wireless smart health watch in ABS with 70% TPU strap. 0.96 inch touch LCD display. Rechargeable Li-Pol 90 mAh battery. Requires a free app (HryFine available in both iOS and Android). **Size** 2,4x4,5x8 cm **Print technique** Pad printing,S



Busca MO2277

Smart Apple Find My locator anti loss finder. Only compatible with Apple devices (iOS). The Apple Find My network is a safe and convenient way to find your compatible personal items using your Apple devices. **Size** 5,4x3x6 cm **Print technique** Pad printing,DL,D01



Silent MO2275


Active noise cancelling (ANC) 5.3 wireless foldable headphones in ABS. Hands free function and built-in microphone. Playing time approx. 17 hours. Includes micro USB charging cable. Rechargeable 200 mAh Li-ION battery. All presented in PU pouch. Operating range: 10 m. **Size** 17,5x8x20 cm **Print technique** Digital label,D01



Onbag MO2373 

Carry-on hand luggage travel bag in 600D RPET with large zippered front pocket, two small side pockets. Includes 15 inch laptop compartment. Padded removable and adjustable shoulder strap. Trolley holder on reverse side.
Size 40x15x30 cm **Print technique** Screen transfer,S,TD



Dalvik MO2284 

Laptop backpack trolley with wheels in 600D RPET polyester. Includes one internal 15 inch laptop compartment. Zippered front pocket. Two side slip pockets. Three inner slip pockets. Padded back and shoulder straps. 2 wheels and double tube frame. **Size** 31x19x47 cm **Print technique** Screen transfer,S,TD,TR



Budapest MO9178 ●

20 inch hard-shell trolley in ABS. 1 main compartment and inner compartment. Includes a security lock. Rides on 4 wheels. **Size** 34x20x47 cm
Print technique Laser engraving,D01,DL



Stor MO2341

14 inch underseat luggage trolley with 4 wheels in ABS. It has an inside zippered pocket. Including a combination lock and double tube frame. **Size** 40x20x30 cm **Print technique** Pad printing,L,DL,D01



The carry-on trolley that fits under most airplane seats

This 14-inch hand-luggage trolley is a sturdy and functional under seat bag ideal for any short trip. With space to store your valuables, and no you can also avoid checked bags fees!



Stor MO2341

- A 4 wheels trolley
- B 14 inch capacity
- C Security lock included
- D Fits the underseat plane space
- E Retractable handle

Comfortable to carry and protects your tech



03



Fodral MO2300



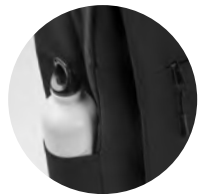
15 inch laptop bag in 300D RPET polyester with handles and luggage pass-through strap. **Size** 40x3x29 cm **Print technique** Screen transfer,S,TD,TR



03



15





Akraos MO2318



Slim backpack in 600D RPET polyester and 210D lining. Has 15 inch laptop compartment, a 10 inch tablet outside zippered pocket, 2 internal pockets, 2 internal pen pockets, zippered front pocket. 2 side pockets. Soft padded back and shoulder straps. Suitcase sleeve. **Size** 31x13x30 cm **Print technique** Screen transfer,S,TD,TR



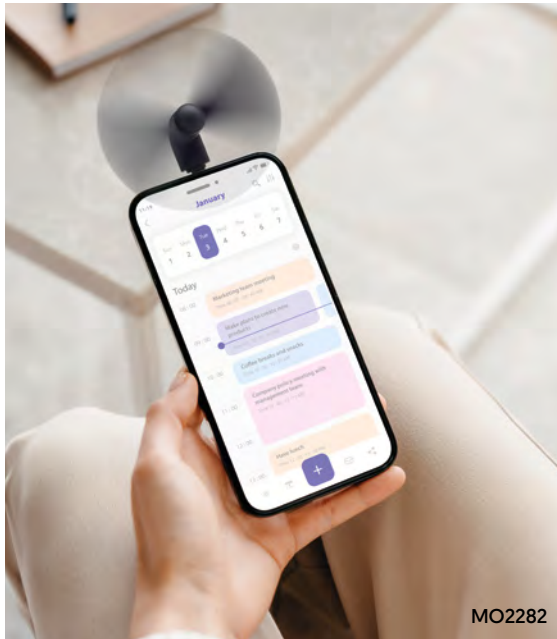
Laugar MO2305  

Slim 15 inch laptop backpack in 300D RPET with safe 180 degree opening with 210D RPET lining. Includes laptop compartment, 2 internal slip pockets, 2 internal pen pockets and 2 padded carry handles. Soft padded back and shoulder straps. Suitcase sleeve. **Size** 41x29x11 cm **Print technique** Screen transfer,S,TD,TR



MO2305

MO2317



MO2282



MO2176

MO2388

Practical accessories for your office

Upgrade branded office essentials. Keep cool with our USB fan, use this convenient pen with earphone cleaning tools, and illuminate your workspace with our retractable lamp. The perfect blend of functionality and innovation.



MO2285



MO2339

MO2388

- MO2282 › 23 Portable USB-C fan
- MO2388 › 23 Pen with TWS cleaning set
- MO2339 › 23 USB rechargeable table lamp
- MO2285 › 29 A5 notebook PU front pocket



Taplamb MO2339

Retractable and rechargeable USB table lamp in ABS. Includes 12 LED lights with adjustable light intensity and stepless dimming. Built-in battery: 1200 mAh (6hr working time after fully charged). Including USB Type-A to Type-C charging cable. **Size** Ø10,6x28 cm **Print technique** Pad printing,DL,D01



Kleen Set MO2388

Pen with TWS cleaning set. It has a True Wireless Stereo (TWS) earbud cleaning kit: metal nib, sponge and brush. Blue ink. **Size** Ø1,4x15,9 cm **Print technique** Pad printing



Phan MO2282

Portable USB-C smartphone fan in TPE. **Size** 8,8x3,5x3,7 cm **Print technique** Pad printing



MO2323



MO2361

MO8117



MO2360

MO2354

Be organised at any time



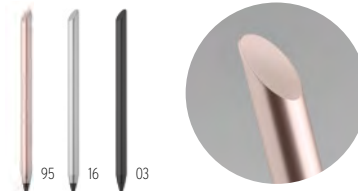
Faux MO2361

A4 portfolio in RPET with faux leather details. Replaceable A4 notepad. 30 recycled paper lined pages. Pen holder. 4 cardholders, 3 small pockets and one big compartment. Magnetic strap closure. **Size** 24x2x31 cm
Print technique Screen printing, T1, TD, TR



Feux MO2360

A5 portfolio in RPET with faux leather details. Replaceable A5 notebook with hard cork cover. Case bound. 128 recycled paper lined pages (64 sheets). Pen holder. 2 cardholders and one big compartment. Elastic closure strap with metal detail. **Size** 17,5x2x23 cm
Print technique Screen printing, T1, TD, TR



Penever MO2354

Long lasting recycled aluminium inkless pen. The pen writes with the metal alloy tip that has a plastic protection cover. **Size** Ø0,8x15,1 cm
Print technique Pad printing, L



Gifts sets that makes an impression

Our curated gift sets are sophisticated and practical. Featuring a stylish notebook, pen, and keyring, this set elevates both style and functionality, leaving a lasting impression for the recipient.

- A RPET notebook with front phone compartment.
- B Metal and RPET card holder.
- C Metal and RPET twist ball pen [blue ink].



Scribi MO2332 

Metal twist ball pen with RPET polyester detail presented in gift box. Blue ink. **Size** 19,8x4,3x2,2 cm **Print technique** Pad printing,S,DL,L



Scribi2 MO2333 



2 piece gift set in gift box. Including metal twist ball pen with RPET polyester detail and RPET polyester key ring. Blue ink. **Size** 16x7,7x2,7 cm **Print technique** Pad printing,S,DL,L,T1,TD,TR



Scribi3 MO2334 

3 piece gift set in gift box. Including metal twist ball pen with RPET polyester detail, RPET polyester key ring and RPET polyester cardholder with metal plate. Blue ink. **Size** 16x16x2,7 cm **Print technique** Pad printing,S,DL,L,T1,TD,TR



Scribi4 MO2335  

3 piece set in gift box. Including metal twist ball pen with RPET polyester detail, RPET hard cover notebook with front smartphone pocket, and RPET polyester keyring. Blue ink. **Size** 22,6x21,6x2,5 cm **Print technique** Pad printing,S,T1,TD,TRL

MO2325



15



03



15

Notemix MO2390



A5 RPET felt hard cover notebook set with phone stand functionality and push ball pen with bamboo barrel. Case bound. 160 recycled paper lined pages (80 sheets). Elastic closure strap. Ribbon bookmark. Blue ink. **Size** 19,5x1,8x23,8 cm
Print technique Round screen printing ,S,L,P,T,I,TD,TR



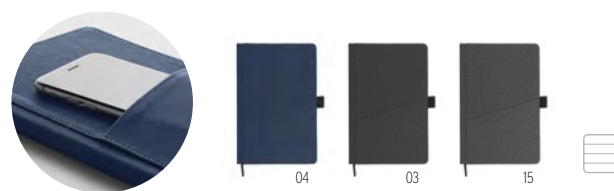
MO2390



Colour trendy pens and notebooks




Bergamo MO2309  
 Recycled aluminium push ball pen. Silver tip and clip. Blue ink.
Size Ø0,9x13,8 cm **Print technique** Pad printing,L



Cinco MO2285 
 A5 notebook with PU hard cover with front phone pocket. Case bound. 160 recycled paper lined pages (80 sheets). Matching ribbon bookmark. **Size** 21x14x1,2 cm
Print technique Pad printing,S,T1,TD,TR



Geneva MO2380 
Recycled aluminium stylus push ball pen with rose gold details. Blue ink. **Size** Ø1x14,3 cm **Print technique** Pad printing,L



Bern Rose MO2371 
Push button pen in recycled aluminium. Blue ink. **Size** Ø1x13,5 cm **Print technique** Pad printing,L




12



98



Dana MO6560 ● 

Push button ball pen in recycled aluminium. Blue ink.
Size Ø0,8x14 cm **Print technique** Pad printing,L



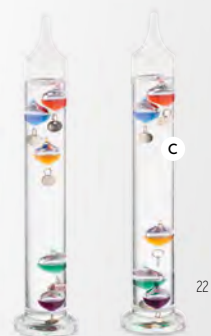
Bern Ra MO6561 ● 

Push button ball pen in recycled aluminium. Blue ink.
Size Ø1x13,7 cm **Print technique** Pad printing,L

Galileo's thermometer historical, beautiful and simple

This thermometer is a stylish accessory to any work or home space. It is crafted from a sealed glass cylinder housing a clear liquid and multiple glass vessels with varying density. Each vessel responds to temperature changes by either rising or falling in the liquid. This item provides approximate ambient temperatures only.

- A Glass tube container
- B Liquid inside
- C Vessels indicating temperature
- D Temperature label



Gali MO2272

Galileo thermometer in glass with five coloured floating globes. Each globe indicates the temperature from 18°C to 26°C: Red 26°, Royal Blue 24°, Orange 22°, Green 20° and Purple 18°. The lowest sphere in the top group indicates ambient temperature.

Size Ø3.6x28 cm **Print technique** Laser engraving,P





Clambu MO2353



Analogue bamboo table clock. Not included 1 AA battery.
Size 8x4x9,9 cm **Print technique** Pad printing,L,DL,D01



06



06



03



Memweek MO2289



125 page weekly desk planner in 6 languages (EN/DE/FR/ES/IT/NL/PL) with kraft paper cover, carton barrel blue ink push button pen, wooden ruler and sticky note memo pad. **Size** 30,x1,6x21,4 cm **Print technique** Pad printing,S,DL



Caratil MO2396

A5 notebook with hard recycled carton cover. Case bound. 160 lined pages (80 sheets recycled paper). Elastic closure strap and pen loop, ribbon bookmark. Includes push button ball pen with recycled paper barrel. Blue ink. **Size** 14x1,2x21 cm **Print technique** Pad printing,S,B,PD



Lifestyle Experience



MO2325 › 49



MO2325 › 49

This new collection offers products for all movements in life. Elevate your brand with a versatile collection of products from tumblers to lunch boxes. Stand out with various customisation styles and printing techniques.



MO2316 › 37



MO2311 › 51



MO2316

Recycled stainless steel collection in new colors

New vacuum insulating bottles, now available in popular new colours! Crafted from 90% recycled stainless steel and convenient carry handle. Available in several sizes and shapes, it keeps your drinks hot or cold.



MO2315



MO2317

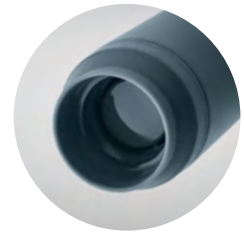
- MO2315 > 37 Double wall bottle 500 ml.
- MO2316 > 37 Double wall bottle 320 ml.
- MO2317 > 37 Double wall tumbler 350 ml.



60



20



15



Emerald MO2315

Double wall vacuum insulating bottle in recycled stainless steel (90% recycled stainless steel and 10% stainless steel) with rubber finish and silicone handle. Capacity: 500 ml. **Size** Ø7x22,5 cm **Print technique** Round screen printing,RL,RD,L,P



Onyx MO2316

Double wall vacuum insulating bottle in recycled stainless steel (90% recycled stainless steel and 10% stainless steel) with recycled PP double lid opening for easy cleaning. Leak-free. Capacity: 320 ml. **Size** Ø6,5x20 cm **Print technique** Round screen printing,RL,RD,L,P

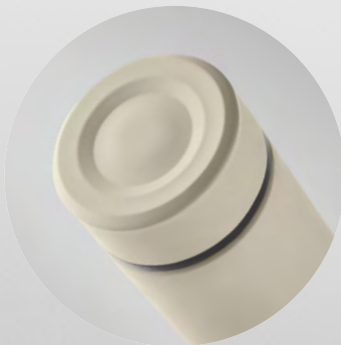


Topaz MO2317

Double wall tumbler in recycled stainless steel (90% recycled stainless steel and 10% stainless steel) with recycled PP outside layer with RPET wrist strap. Leak-free. Capacity: 350 ml. **Size** Ø8,5x14 cm **Print technique** Round screen printing,RD,S,TI,TD,TR,P

Recycled stainless steel with ceramic coating


This bottle has a ceramic coating
for the purest and cleanest taste.



Nunavut MO2383


- A Double wall
- B 500 ml capacity
- C Ceramic coating inside
- D Leak-proof



Nunavut MO2383 

Double wall vacuum insulating bottle in recycled stainless steel (90% recycled stainless steel and 10% stainless steel) with ceramic inner lining. Leak-free. Capacity: 420 ml. **Size** Ø6x22 cm
Print technique Round screen printing,RL,RD,DL,L,P,D01



Nunavum MO2398 

Double wall vacuum insulated tumbler in recycled stainless steel (90% recycled stainless steel and 10% stainless steel) with a ceramic inner lining. Leak-free. Capacity: 450 ml. **Size** Ø8,5x15 cm
Print technique Round screen printing,RL,RD,L,P

Heat-cool double wall bottle

Designed with innovative functionality in mind, our bottle features a unique liquid that conducts temperature rapidly when shaken. Unlike traditional vacuum-insulated bottles, this double-wall construction without vacuum insulation, offers a new level of convenience and performance. Experience it for yourself!



Calefrio MO2331



Double wall recycled stainless steel (90% recycled stainless steel and 10% stainless steel) bottle with soft silicone carry ring lid. By simply shaking the bottle surface temperature changes to heating or cooling, depends on liquid inside. Leak-free. Capacity: 400 ml. **Size** Ø6x22 cm **Print technique** Round screen printing,RL,RD,L,P





How to activate it?

Shake bottle for 3 seconds to activate warming or cooling sensation. The outer body of the bottle warms with hot beverages and cools with cold beverages. Shake again to refresh sensation when it fades.



Warm

Hot beverages trigger a warm, soothing touch. Perfect to take the chill off, keeping your hands warm and comfy.



Cool

Cold beverages trigger a pleasingly cool touch. Perfect for those hot days and work outs when you need a quick cool down.



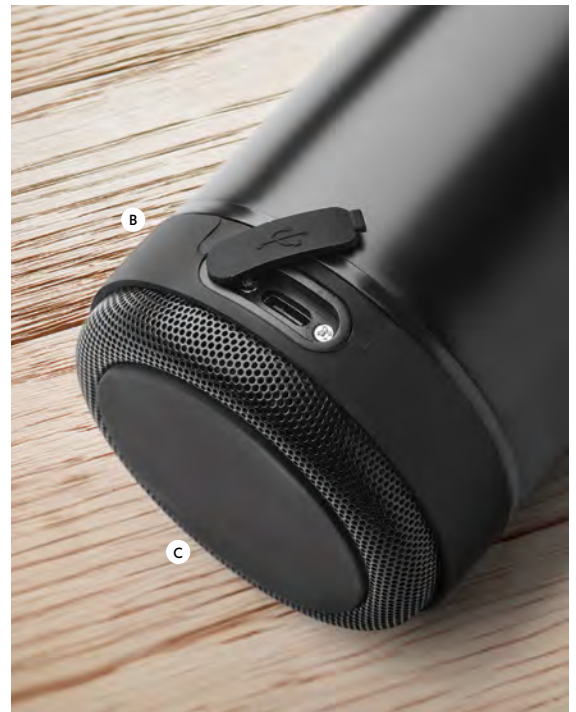
Refresh effect

Beverage temperature will change depending on outside environment over the course of 3 hours. Recommend refreshing beverage every 3 hours for maximum warming/cooling effect.



Bottle with portable speaker function

This bottle offers both convenience and entertainment on the go. 500 ml capacity and a leak-free design, with handy silicone strap and a speaker, which is easily removeable for cleaning, ensuring your bottle stays fresh and functional.



Musey MO2312

- A 500 mAh speaker battery
- B USB-C charge connect
- C Rubber base
- D Silicone hand strap



Musey MO2312

Double wall vacuum insulating bottle in recycled stainless steel (90% recycled stainless steel and 10% stainless steel) and silicone carry handle with detachable 3W wireless speaker. Capacity: 500 ml. 500 mAh battery. Remove speaker for cleaning. Leak-free. **Size** Ø7,2x27 cm
Print technique Round screen printing,RL,RD,L,P

Phottle MO2308

Double wall vacuum insulating bottle in recycled stainless steel (90% recycled stainless steel and 10% stainless steel) with silicone non-slip phone holder ring lid. Leak-free. Capacity: 420 ml. **Size** Ø6x21 cm
Print technique Round screen printing,RL,RD,L,P

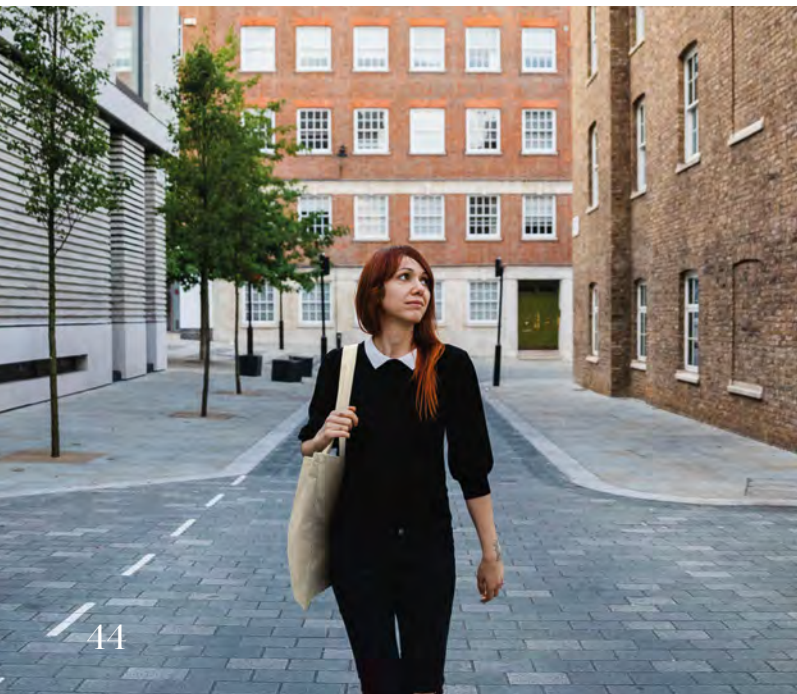
Lunch set for on the go



Emerald Set MO2314



2 piece lunch gift set, including double wall vacuum insulating bottle in recycled stainless steel (90% recycled stainless steel and 10% stainless steel) and recycled PP lunch box with bamboo lid and RPET elastic band. Leak-free. Capacity 500ml and 900ml. **Size** 22x23x7 cm
Print technique Round screen printing, L, P, DL, D01, RL, RD





06



03



85



06

03



06

03



06

16

85

03

Ives MO2234



Double wall vacuum insulated flask in recycled stainless steel, the lid has a carry handle and a cork detail base. Leak-free. Capacity: 500 ml. **Size** Ø7x24 cm
Print technique Round screen printing, RD, RL, L, P

Carabi MO2336



Double wall vacuum insulating bottle in recycled stainless steel (90% recycled stainless steel and 10% stainless steel) with carabiner handle lid. The carabiner is not for climbing (non-professional use). Leak-free. Capacity: 500 ml. **Size** Ø7x23 cm **Print technique** Round screen printing, RL, RD, TS, L, P

Riflow MO2283



Double wall vacuum insulating bottle in recycled stainless steel (90% recycled stainless steel and 10% stainless steel) with built-in straw and handle lid. Leak-free. Capacity: 660 ml. **Size** Ø7x27 cm **Print technique** Round screen printing, RL, RD, L, P, TS



Style it with this essential bottle available in different colours



Athena MO6750 • 

Double wall insulating vacuum bottle in recycled stainless steel (90% recycled stainless steel and 10% stainless steel). Capacity 500 ml. Leak free. **Size** Ø7x22 cm
Print technique Round screen printing, RD, RL, L, TS



MO6750


MO2344

MO2343



27



LOX MO2343 

Recycled stainless steel lunch box with recycled PP lid and 4 side clasp closure. Capacity: 850 ml. **Size** 19x14x6 cm **Print technique** Pad printing,DL,D01,L



27



Lox Plus MO2344 

Recycled stainless steel lunch box with recycled PP lid and 4 side clasp closure. Including separator. Capacity: 1500 ml. **Size** 22,5x17x7,6cm **Print technique** Laser engraving,DL,D01



Walnut MO2322



Single wall tumbler in recycled stainless steel (90% recycled stainless steel and 10% stainless steel) with walnut grip and lid. Capacity: 350 ml. Remove grip for cleaning. As this is a single walled mug heat transfer can still occur. **Size** Ø8,5x10,5 cm **Print technique** Pad printing,L



Acero MO2325



Double wall mug in recycled stainless steel (90% recycled stainless steel and 10% stainless steel) mug with wooden handle. Capacity: 350 ml. **Size** Ø8,5x8 cm **Print technique** Round screen printing,RL,L,P



03



Acerito MO2323



Double wall tumbler in recycled stainless (90% recycled stainless steel and 10% stainless steel) Stackable. Capacity: 250 ml. **Size** Ø8x9 cm **Print technique** Round screen printing,RL,RD,L,P



60



OZ MO2326



Small double wall vacuum insulated tumbler in recycled stainless steel (90% recycled stainless steel and 10% stainless steel) with drinking hole in the lid in transparent PP. Capacity: 160 ml. **Size** Ø6x11,5 cm **Print technique** Round screen printing,L



20



MO2310

PLA, the renewable and compostable raw material

PLA material has a reduced carbon footprint compared to fossil based plastics. Crops absorb CO₂ when growing and it takes less energy and this produces less greenhouse gas to produce PLA than fossil-based plastic. Do you need more reasons to use it?



MO2311

- MO2310 > 5l PLA double wall tumbler 350ml
- MO2311 > 5l PLA corn lunch box 1000ml



MO2310



MO2311



Beibaku MO2310

Double wall tumbler in 100% PLA corn with recycled PP drinking lid with inner TPR. Leak free. Capacity: 350 ml. **Size** Ø8,5x14 cm
Print technique Round screen printing,RD,P



Beibabox MO2311



100% PLA corn lunch box with bamboo lid and RPET elastic band closure. Capacity : 1000 ml. **Size** 19x12x6,5 cm **Print technique** Pad printing,L,DL,D01



Tridus MO6866



Double wall tumbler with drinking straw lid in recycled PP. Capacity: 300 ml. Size Ø9x12 cm **Print technique** Round screen printing,P



MO6875

MoviPack

MO6855

Movi
Pack

MO6866

MO2290



Recycled PP
lunch items.
Choose your size!



MO2290



MO6855



Indusmax MO2290



Large recycled PP lunch box with airtight lid, silicone valve and two side clasp closure. Capacity: 2200 ml. **Size** 26x17x8 cm
Print technique Pad printing,DL,D01



Indus MO6855



Recycled PP lunch box with airtight lid, silicone valve and two side buckles. Capacity: 800 ml. **Size** 21x11,5x5,5 cm **Print technique** Pad printing,D01,DL



MO2121

MO2329

MO6935

MO2330

On the go for little ones

When travelling with children comfort is key. This new collection is the perfect gift for them.



MO2329

MO2330



Sid MO2329

Kid's drink bottle in tritan with built in straw lid. Leak free. Capacity: 450 ml. **Size** Ø7x19 cm **Print technique** Round screen printing,P,DL



Sed MO2330

Baby sippy cup in Tritan. Capacity: 250 ml. **Size** Ø8x12 cm **Print technique** Pad printing



MO6935



Sud MO6935

Kid's PP lunch box in recycled PP with click closure and inner tray. Capacity: 700 ml. **Size** 17x12x6 cm **Print technique** Pad printing,DL,DO1



Kase MO2385

Small ceramic fondue set for two. Including two metal forks with wooden handles. Tea light not included. Capacity: 240 ml. **Size** 10x10x13 cm
Print technique Round screen printing,PL



Big Kase MO2386

Small ceramic fondue set with lid for two. Including 2 metal forks with wooden handles. Tea light not included. Capacity: 300 ml. **Size** 14x13x15,5 cm
Print technique Pad printing,TC,L



Froath MO2292

Handheld electric milk frother in ABS with matt finish. Built-in battery capacity 500 mAh. USB Type-C rechargeable (cable included). Speed: 10000 rpm. **Size** Ø3x22 cm **Print technique** Pad printing,DL,D01



Colour Trent MO9242 ●

Ceramic coloured mug of 290 ml capacity. Presented in an individual corrugated carton gift box. **Size** Ø8,5x10 cm **Print technique** Round screen printing,PTC



MO2087

MO6643

MO2070

Caseus Corner
CHEESE ENTHUSIASTS

MO2386

MO6149



Sublimation mugs collection

A selection of our sublimation mugs, all in ceramic but in different variations, shapes and colours. Transform these mugs in to unique item by adding creative decoration designs.



CX1483

MO6323



06



03



09



Sublim MO8040

Ceramic mug of 300 ml capacity with special coating for sublimation. Individual packing in white carton box. **Size** Ø8x9,5 cm **Print technique** Sublimation,RS,P



Tweenies Sublim MO9451

Ceramic vintage style mug of 240 ml capacity with special coating for sublimation print. Bulk packing. **Size** Ø8,5x8,5 cm **Print technique** Sublimation,P



07

05

09

04

37

85

03

Sublimcoly MO8422

Ceramic mug of 300 ml capacity with special coating for sublimation with coloured handle and inside. Individual packing in white carton box. **Size** Ø8x9 cm **Print technique** Sublimation,RS,P



06



06



06

Subcork MO6323



Ceramic mug with special coating for sublimation print and cork base detail. Individual packing in white carton box. Capacity: 300 ml Cork is 100% natural material. **Size** Ø8,3x11 cm **Print technique** Sublimation,RS,P

Karoo MO2101



Ceramic mug with cork base detail. Capacity: 280 ml. **Size** Ø7,9x9,4 cm **Print technique** Round screen printing,P

Karoo Sublim MO2102



Ceramic mug with special coating for sublimation print and cork base detail. Capacity: 280 ml. **Size** Ø7,9x9,4 cm **Print technique** Sublimation,RS,P

Simple and easy to use



03

Vino MO2291

Electric wine bottle opener in ABS casing with black matt finish. Excluding 4 AAA batteries. **Size** 5x4,5x19 cm
Print technique Pad printing,DL



60





Corcho MO2320

Automatic lever corkscrew in ABS and rubberised finish. **Size** 15x3x16 cm
Print technique Laser engraving,P,D01



Vinovault Set MO2381

Bottle shape wine set in bamboo case. Including corkscrew, wine pourer, bottle stopper and wine bottle drip ring. **Size** 29x8,5x3 cm
Print technique Laser engraving,P,D



Chesset MO2393

Chess board wine set in bamboo box. Including corkscrew, wine pourer, bottle stopper and wine bottle drip ring. **Size** 16,5x14,5x4,5 cm
Print technique Laser engraving,P



MO6158



MO2293



13



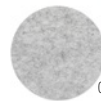
Mai Tai MO2293



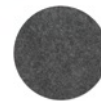
Cocktail kit in cotton pouch with string. Including 5 piece: a double-sided measuring jigger (15 & 30 ml), wooden muddler, cocktail strainer, drink stirrer and waiter's corkscrew knife. **Size** 26x23 cm
Print technique Laser engraving,S,T1,TD



04



07



15



04



03

Feltster MO2356

Round coaster in RPET felt. **Size** Ø10x0,2 cm
Print technique Screen printing,T1,TD,TR



MO6429

MO2352



03

Malta MO2352

Bar runner mat in PVC. **Size** 60x9x1 cm
Print technique Digital printing



16

Multivino MO2296

Stainless steel wine bottle shaped pocket knife with 4 functions: bottle opener, knife, corkscrew and key ring. **Size** 10x2,5 cm **Print technique** Pad printing,L,DL,D01



40

Wool MO2313

3 in 1 bottle opener in bamboo case. It includes a corkscrew, 2 bottle openers and foil cutter. **Size** 13,5x4x1,2 cm
Print technique Pad printing,L



40

Barto MO2288

Bartender bottle opener with rubber wood handle. **Size** 4x14,4x2,2 cm **Print technique** Pad printing,L



MO2400 › 66

MO2310 › 51

MO2361 › 25

Outdoor Experience



MO2270 › 17

Featuring durable backpacks, umbrellas and winter out fit accessories this collection is crafted with quality and longevity. Our products are designed to endure and accompany you on every outdoor adventure.



MO2310 › 51

Made in Recycled fabrics



Koper Tote MO2306



Weekend bag in recycled pre-consumer cotton and recycled polyester (70%/30%) with lining 210D RPET polyester. It has a front slip pocket, zippered back pocket a removable and adjustable shoulder strap and padded bottom. Trolley holder on reverse side. **Size** 60x29x22 cm
Print technique Screen transfer,S,TD,TR



03



03



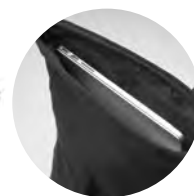
Koper Back MO2307



15 inch laptop backpack in recycled pre-consumer cotton and recycled polyester (70%/30%). It has front zippered pocket, zippered pocket on the back side. Soft padded back and shoulder straps. Trolley holder on reverse side. **Size** 34x45x13 cm
Print technique Screen transfer,S,TD,TR



03



Koper Roll MO2400





Zippered roll top 15 inch laptop backpack in recycled pre-consumer cotton and recycled polyester (70%/30%). Front zippered pocket. Padded back and shoulder straps. 340gr/m². **Size** 27x10x55 cm **Print technique** Screen transfer,S,TD,TR



MO2391

MO2383 > 39



Leirur MO2391  

15inch laptop backpack in washed canvas. Large front zippered pocket with inner laptop compartment. Small front zippered pocket. Two side-slip pockets. Padded back and shoulder straps, back panel and base. 450 gr/m². **Size** 30x18x45 cm **Print technique** Screen transfer,S,TD,TR



Discovering new landscapes

These outdoor activity accessories are designed to elevate your brand's presence. From branded binoculars to hiking sticks. Carry brand essentials in style with customisable backpacks and keep your logo close at hand with sleek and practical waist bags.

MO2392 › 70 Hiking waist bag in 420D nylon.

MO2372 › 70 Hiking backpack 18L.

MO2363 › 71 Nordic walking poles.



MO2363



MO2372



Globe-trotting backpacks

This convenient light backpack is the ideal companion during hiking trips. Featuring a 15-inch laptop compartment, front zippered compartment, and slide pockets, it offers ample storage for all your gear.



Nyko MO2392

Hiking waist bag in water repellent 420D nylon with 210D polyester lining. Reflective stripe. Fully padded main compartment and large two-way zip opening. Ventilated reverse side. **Size** 36x6,5x16 cm **Print technique** Screen transfer,S,TD,TR



Bagga MO2372

Hiking backpack 18L in water repellent 420D nylon with reflective stripe. It has a 15 inch laptop compartment. One front zippered compartment and one front side pockets with buckle closure. Two side slide pockets. Padded back and shoulder straps. Ventilated back side. **Size** 29,5x11x50 cm **Print technique** Screen printing,T1,TD,TR



Sithru MO2263

Compact lightweight binoculars in ABS (8x 21) with wrist strap. Includes cleaning cloth. **Size** 9,2 x 10,2 cm **Print technique** Pad printing,DL



Xiula MO2268

Metal whistle attached to lanyard with safety buckle. **Size** 4,3x1,7 cm **Print technique** Pad printing,DO1,DL,L



Nole MO2363

Fully adjustable nordic walking poles in aluminium with cork handles, walking rubber tips and mud baskets. Presented in a RPET ripstop pouch. Fully adjustable: 65cm to 135cm. **Size** 71x13 cm **Print technique** Screen printing,T1,TD,TR



Cabetri MO2401



Drawstring bag in recycled pre-consumer cotton (70 %) and RPET (30%) 140 gr/m². **Size** 37x41 cm **Print technique** Screen printing,T1,TR,TD



Cabetri Colour MO2402



Drawstring bag in recycled pre-consumer cotton (70 %) and RPET (30%) 140 gr/m². **Size** 37x41 cm **Print technique** Screen printing,T1,TR,TD



Panda Bag MO6550



Recycled cotton drawstring bag with natural cords 50% cotton and 50% recycled cotton. 220 gr/m². **Size** 38x42 cm **Print technique** Screen printing,T1,TD,TR

Irea MO2170



15 inch rolltop laptop backpack in 600D polyester with padded back and base reinforcement. Zippered front pocket. 210D lining. **Size** 32x13x61 cm **Print technique** Screen printing,T1,TD,TR



New colours for a fashionable & comfortable urban life

Upgrade your essentials with our trendy new colours. Perfectly designed to complement all brands and accessories, our collection adds a fresh, urban touch to your daily life.



- MO2170 > 72 600D polyester rolltop backpack.
- MO2317 > 51 PLA double wall tumbler 350ml.




A small folded umbrella

When closed, it occupies minimal space, yet expands to a generous 23 inches, ensuring robust protection from rain. Featuring automatic opening and closing functionality, its double-layered fabric boasts an interior design that adds a distinctive touch to your brand.



- A Stylish 23 inch umbrella.
- B Checkered inside pattern.
- C Auto open and closed system.
- D Robust curved handle.



Canova MO2264  23"


23 inch 3 fold auto open/close windproof umbrella in double-layer 190T pongee with chequered inside pattern. Black plated frame and shaft. Two-section black fibreglass nickel plated middle part. Curved wooden handle. **Size** 116 cm **Print technique** Screen printing,T1,TD,TR



Canova + MO2169  23"


23 inch auto open windproof umbrella in 190T pongee with chequered inside pattern. Fibreglass frame with black plated shaft and plastic tips. Curved rubber finished handle. Manual closure. **Size** 58,5 cm **Print technique** Screen printing,T1,TD,TR



Arco MO2287  18"

18 inch kids umbrella in 190T pongee with rainbow pattern. It has 8 panels. Manual opening and closure. Fibreglass ribs and frame. Plastic handle and tips. Curved handle. **Size** 46 cm **Print technique** Screen printing,T1,TD,TR



Lluvia MO2286  27"

27 inch auto open wind-proof umbrella in 190T RPET pongee. Fibreglass shaft and ribs. Recycled Wheatstraw and ABS handle. Plastic tips and top. **Size** 116 cm **Print technique** Screen printing,T1,TD,TR



MU2008

Allover printed umbrellas

yourChoice

Your favourite umbrella is available from stock but can also be created according to your exact specifications. The panels can be produced in your logo colours or even with an all over printed photo design.

Delivery time from 4 weeks.



MU2007



MU2008 > 77 Light folded umbrella.
MU2007 > 77 8 panel foldable umbrella.





MO2168 23"

Windproof umbrella. 23 inch (dia. 102cm), with black plated metal shaft and fiberglass ribs. Plastic tips, auto opening and rubberized plastic handle.



MU3012 23"

23 inch, fiberglass shaft and ribs. ABS handle with rubberized finish. Manual opening.



MU2008 19"

3 fold, 21 inch (dia. 95cm) umbrella with wooden handle. Black plated shaft, fiberglass ribs. Automatic opening and closure. Including a matching pouch.



MU2007 21"

3 fold, 21 inch (dia. 95cm) umbrella. Black coated shaft, fiberglass ribs. Automatic opening and closure. Including a matching pouch.



MO2263

MO2325

MO2363

MO2359

MO2399

MO2338



15

85

03

Capnit MO2359



Unisex knitted beanie in soft stretchable RPET polyester with cuff and patch.
 Size Ø21x23 cm **Print technique** Screen printing,T1,TD,E



15

85

03

Handnit MO2399



Knitted gloves in soft stretchable RPET polyester with decoration patch.
 Size 24x12 cm **Print technique** Screen printing,T1,TD,E



04




Polo Rpet MO9965 

Unisex knitted Beanie hat in soft stretchable RPET polyester with rolled up cuff. **Size** Ø20x21 cm **Print technique** Embroidery



04



Rafy MO2338 

Scarf in stretchable RPET polyester. **Size** 18x150 cm **Print technique** Digital transfer,E



85



Takai MO6667 

Tactile gloves for smartphone in RPET with label for printing area. **Size** 23x12 cm **Print technique** Laser engraving,E

MO6645



13



Lighty MO6645 •

Cotton beanie (95% cotton and 5% spandex) in 190 gr/m². **Size** 25x26 cm
Print technique Screen printing,E,T1,TD,TR



04



03

Daria MO8561

Multifunctional trendy bandana made of microfiber. **Size** 47x25 cm
Print technique Screen transfer,TD,TR

yourChoice

Multifunctional scarfs

Keeps wearers warm in the cold and cool in the heat. With a full surface to print your message these multi-scarfs are the perfect functional gifts. The most popular models now also available from European production. **Delivery from 2 weeks.**

50
MOQ



ML3003



100% RPET. Size 50x25 cm. Also available from EU: ML6003.



ML3103



Made in Europe - 100% RPET. Size 50x25 cm. Also available from EU: ML6103.



ML3006

Polyester multiscarf with fleece. 70x25cm.



yourChoice

Your own design beanies and scarves

Create your multicolour design beanies and add a woven or sublimation patch to really stand out!

Delivery time from 7 weeks.

50
MOQ



MW2007



Double layer acrylic jacquard scarf with in your multicolour custom design. Also available in RPET: MW2107.



MW1010



Acrylic custom pattern jacquard cuff beanie with pompon. Also available in RPET: MW1110.

yourChoice



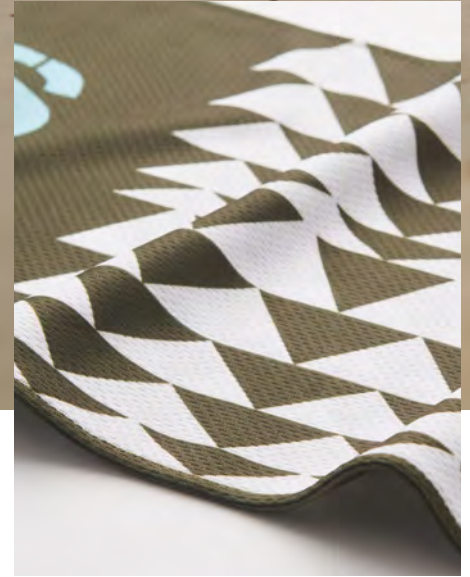
MW1011 
Acrylic custom pattern jacquard beanie.
Also available in RPET: MW1111.



MW1016
Acrylic custom pattern jacquard beanie with 3*1 rib knit cuff and a pompon.



MW1012 
Acrylic custom pattern jacquard cuff beanie.
Also available in RPET: MW1112.



100 MW2008
MOQ Lowest priced full colour double layer scarf. Made of satin fabric.



50 MW2005
MOQ Full colour double layer scarf made of Lycra fabric.



50 MW2006
MOQ Full colour double layer scarf made of polyester mesh fabric.



Full Colour.

Delivery time from 5 weeks.



50



MW5003

Full colour double layer beanie 190gsm, 100% polyester 1 size fits most.



MW5004

Full colour beanie with fleece lining 190gsm, 100% polyester 1 size fits most.



MW5004

Fleece

Fleece lining makes this beanie also suitable for colder weather

Stylish Apparel

Discover our collection of SOL'S garments for the winter season, featuring parkas, fleeces, lightweight jackets, and sweatshirts. For over 30 years, the SOL'S brand has been creating high-quality, customizable apparel that combines style and durability, helping you express yourself and convey your message effectively.

SOL'S®
the fair spirit



180 gr



POLYESTER

SOL'S ROBYN S02109

Parka. OXFORD 300D. 100% polyester - PVC

coating. Lining & padding : 100% polyester

Printing techniques Screen printing,E,TT



XS / S / M / L / XL / XXL / 3X / 4XL

End of Year Experience

POLYAMIDE & POLYESTER

SOL'S RIDE MEN S01193
SOL'S RIDE WOMEN S01170

Padded jacket. Polyamide 380T.
Outside & lining: 100% polyamide.
Padding: 100% polyester - 180 gsm.
Printing techniques Screen transfer



S / M / L / XL / XXL / 3XL

POLYAMIDE & POLYESTER

SOL'S WAVE MEN S01436
SOL'S WAVE WOMEN S01437

Padded bodywarmer. Polyamide 380T.
Outside & lining: 100% polyamide.
Padding: 100% polyester 180g/m²
Printing techniques Screen transfer



S / M / L / XL / XXL / 3XL

SORONA® & RECYCLED POLYESTER

SOL'S WILSON MEN S02898
SOL'S WILSON WOMEN S02899

Padded jacket. POLYAMIDE 380T.
Outer fabric and lining: 100% polyamide.
Padding (please note that we are in the
process of transitioning from stock):
90% down and 10% feather until stock
lasts. Then transition to 60% Sorona
40% recycled polyester.

Printing techniques Embroidery,TT



S / M / L / XL / XXL / 3XL

SORONA® & RECYCLED POLYESTER

SOL'S WILSON BW MEN
S02889
SOL'S WILSON BW WOMEN
S02890

Padded bodywarmer. POLYAMIDE 380T.
Outer fabric and lining: 100% polyamide.
Padding (please note that we are in the
process of transitioning from stock):
90% down and 10% feather until stock
lasts. Then transition to 60% Sorona
40% recycled polyester.

Printing techniques Embroidery,TT



S / M / L / XL / XXL / 3XL

*Available in women style

**Available in kids style

280 gr



POLYESTER

SOL'S STREAM BW MEN S04020
SOL'S STREAM BW WOMEN S04021

Men's lightweight bodywarmer. Taffeta 280T.
 Outer fabric and lining: 100% polyester.
 Padding: 100% polyester down.

Printing techniques Screen transfer



S / M / L / XL / XXL / 3XL



FLEECE

SOL'S NORTH S55000
SOL'S NORTH WOMEN S54500

Full-zip sweatshirt. FLEECE 300.
 100% polyester high density.
Printing techniques Embroidery,TT



XS / S / M / L / XL / XXL / 3XL / 4XL / 5XL



FLEECE 320

SOL'S NORWAY S51000

Full-zip bodywarmer. FLEECE 320.
 100% polyester high density.
Printing techniques Embroidery,TT



XS / S / M / L / XL / XXL / 3XL



XS / S / M / L / XL / XXL / 3XL / 4XL / 5XL

*Available in women style

**Available in kids style



190 gr

COTTON JERSEY

SOL'S Imperial LSL MEN s02074
SOL'S Imperial LSL WOMEN s02075

Long sleeve T-shirt. JERSEY 190.
100% semi-combed ringspun cotton
Printing techniques Screen printing,E,TDT,TT



S02947



S / M / L / XL / XXL / 3XL



XS / S / M / L / XL / XXL / 3XL / 4XL



180gr

COTTON PIQUE

SOL'S PERFECT LSL MEN s02087
SOL'S PERFECT LSL WOMEN s02083

Long sleeve polo shirt. PIQUÉ 180. 100% combed cotton
Printing techniques Screen printing,E,TDT,TT



S / M / L / XL / XXL / 3XL / 4XL

Colours and sizes depending on the selected style.



80% COTTON / 20% RECYCLED POLYESTER

SOL'S CARTER S03812

Unisex full-zip hoodie. Brushed fleece 280.
80% cotton - 20% GRS certified recycled polyester
Printing techniques Screen printing,E,TD,T



XS / S / M / L / XL / XXL / 3XL / Confort sizing



80% COTTON / 20% RECYCLED POLYESTER

SOL'S CONRAD S04234

Unisex zip-collar sweatshirt. Brushed fleece 280.
80% cotton - 20% GRS certified recycled polyester
Printing techniques Screen printing,E,TD,T



XS / S / M / L / XL / XXL / 3XL / 4XL / Confort sizing

*Available in women style

**Available in kids style



80% COTTON / 20% RECYCLED POLYESTER

SOL'S CONDOR S03815

Hoodie. Brushed fleece 280. 80% cotton - 20% GRS certified recycled polyester

Printing techniques Screen printing,E,TDT,TT



CU815208



XS / S / M / L / XL / XXL / 3XL / 4XL / 5XL / Confort sizing



XS / S / M / L / XL / XXL / 3XL / Confort sizing



80% COTTON / 20% RECYCLED POLYESTER

SOL'S COLUMBIA S03814

Round neck sweatshirt. Brushed fleece 280. 80% cotton - 20% GRS certified recycled polyester

Printing techniques Screen printing,E,TDT,TT



CU815208



XS / S / M / L / XL / XXL / 3XL / 4XL / 5XL / Confort sizing



XS / S / M / L / XL / XXL / 3XL / 4XL / 5XL Confort sizing



Colours and sizes depending on the selected style.

yourChoice

Custom made hoodies

From just 100pcs you can create your own style and have the fabric matched in your company colours. Personalise accessories such as zippers, pullers and cords and use the full surface for your branding.

Delivery time from 6 weeks



Inspired by SOL'S

100
MOQ

150
MOQ



Unisex



Mix and play with 60 colours



CG1012

Unisex hoodie with kangaroo pocket. Made from ca. 320gsm 60% cotton/40% polyester. Modern fit, inspired by SOL'S SNAKE.



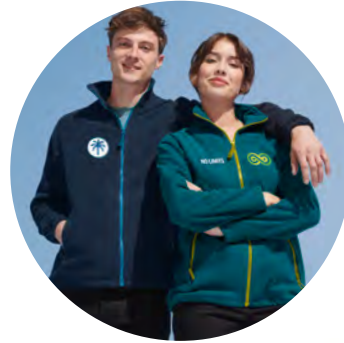


yourChoice

Custom made sweaters

Keep your employees and customers warm in a sweater, fleece or sweatshirt in your own design!

Delivery time from 6 weeks



Inspired by SOL'S



100 **150**
MOQ MOQ

CG1016

Unisex round-neck sweatshirt with rib-knitted cuffs, collar and bottom. Made from ca. 320gsm 60% cotton/40% polyester. Inspired by SOL'S SPIDER.

Mix and play with 60 colours.



CG1016



CG1017



100 **150**
MOQ MOQ

CG1017

Unisex sweatshirt with 1/4 zipper with rib knitted cuffs, collar and bottom. Made from ca. 320gsm 60% cotton/40% polyester. Inspired by SOL'S STAN.

Mix and play with 60 colours.



CG1018



100 **500**
MOQ MOQ

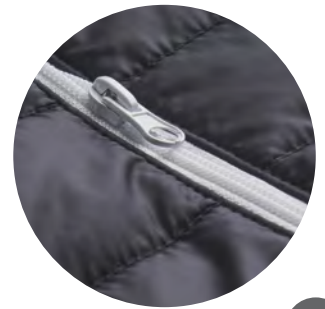
CG1018

Zippered fleece jacket. Made from 100% polyester anti-pilling, 280 gsm. Available in men and women sizes. Inspired by SOL'S NORTH.

Mix and play with 40 colours.



Inspired by SOL'S



100

M00

CG1019

Lightweight bodywarmer made of 100% polyester. Available in men and women sizes. Inspired by SOL'S STREAM. Produced in 1 colour or 2 colours of your choice.

Mix and play with 20 colours



Daily Living



MO2369 › 110



Make yourself at home with our new daily living collection. Whether you are setting the mood with a candle or taking a moment for yourself with a cup of tea, this collection has all the essentials to make everyday living more comfortable and enjoyable.



MO2382 › 105



MO2280 › 109



MO6281

MO6316



Ancient MO6281

Vanilla fragranced wax candle 120gr in glass with bamboo lid in paper tube gift box. 7 cm diameter. Burn time: 20 hours. **Size** Ø7x8,5 cm
Print technique Round screen printing ,L,P



Ancient High MO6316

Vanilla fragranced wax candle in glass with bamboo lid in paper tube gift box. 8 cm diameter. Burn time: 40 hours. 240gr. **Size** Ø8x10,5 cm
Print technique Round screen printing ,DL,L,P

Create a warm ambience



Kivas MO2370

Vanilla fragranced plant based wax candle in glass with stones and wooden wick. 200 gr. Burn time: 20 hours. **Size** Ø8,2x9,2 cm
Print technique Round screen printing ,L,P



Veika MO6986



Fresh linen fragranced plant based wax candle in stoneware jar holder with bamboo lid. 200 gr. Burn time: 36 hours. **Size** Ø8x9,3 cm
Print technique Round screen printing ,L,P



Menkaure MO2061



Fresh linen fragranced plant based wax candle in stoneware jar holder with bamboo lid and cork base. 80 gr. Burn time: 7.5 hours. **Size** Ø7x6,6 cm
Print technique Round screen printing ,L,P



Pesacara MO2379

Cosmetic bag in organic cotton with coloured zipper. 340 gr/m².
Size 23x15 cm **Print technique** Screen printing,T1,TD,TR



Kleuren MO9815

Cosmetic bag in cotton with coloured bottom and matching zipper puller.
 340 gr/m². **Size** 21,5x5x15 cm **Print technique** Screen printing,T1,TD,TR



Faulet MO2376

Braided faux leather cuff bracelet with polished steel hardware. Push-lock clasp. Wrist circumference: 21 cm. **Size** 21x1 cm **Print technique** Pad printing,L



Faletti MO2377

Braided faux leather cuff bracelet with polished steel hardware. Push-lock clasp. Wrist circumference: 18 cm. **Size** 19x0,7 cm **Print technique** Pad printing,L



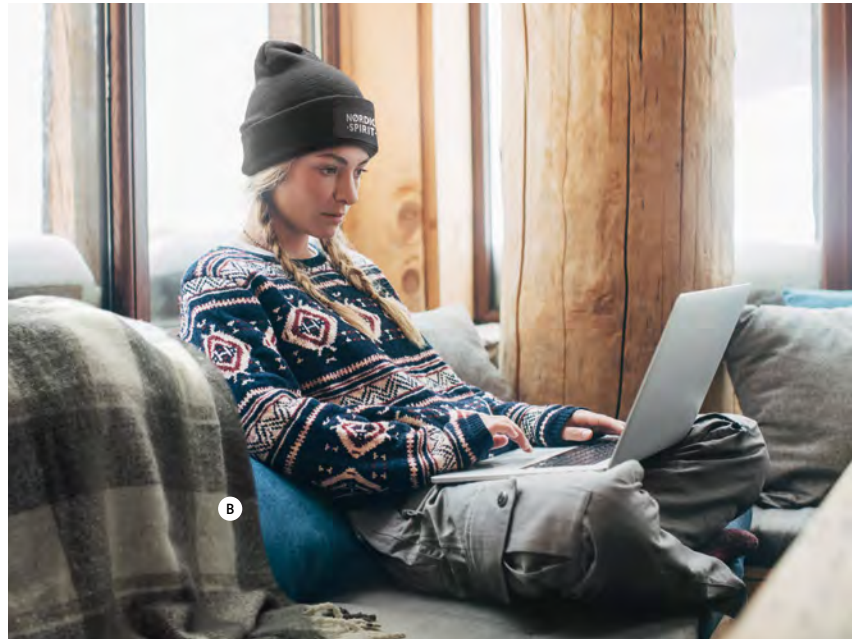
MO6753

MO6604

MO9815

MO2376

MO2377



Feel the warmth of embroidery printing

Experience the luxurious result of our chequered design mohair polyester blanket with hand-rolled fringes. Offering long-lasting, colourful possibilities in up to 15 vibrant colours, perfect for gifting.

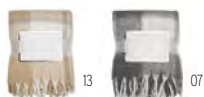


Quet MO2382

- A Embroidery small detail perfection
- B For cozy winter days
- C Polyester mohair blanket



13



Quet MO2382



Chequered design mohair polyester blanket with hand-rolled fringes. Wrapped in ribbon and printable card. **Size** 127x152 cm **Print technique** Digital inlay,E,P,S,DL



41



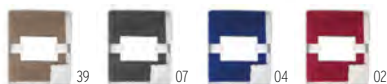
Logan MO6804



280 gr/m² RPET flannel fleece blanket wrapped in ribbon and printable card. **Size** 120x150 cm **Print technique** Digital inlay,E,P,S,DL



07



Zermatt MO9089

200 gr/m² coral fleece blanket with reversible 220 gr/m² polyester sherpa lining. Wrapped in ribbon and printable card. **Size** 120x150 cm **Print technique** Screen printing,E,DL



39



Davos MO9088

280 gr/m² Flannel fleece blanket wrapped in ribbon and printable card. **Size** 120x150 cm **Print technique** Digital inlay,E,P,S,DL



Gifts and accessories for your winter trips

Prepare for your next adventure with our essential outdoor accessories, featuring a cozy blanket for warmth under the stars, a trusty torch to light the way in the dark, a durable tumbler for hot beverages on chilly nights, a snug beanie to keep you warm, and a stylish key ring to keep your essentials close. Explore the great outdoors with confidence and comfort.

- MO6659 Unisex knitted beanie
- MO2357 › 109 3 in 1 emergency hammer
- MO2394 › 108 RPET sherpa fleece blanket

- MO2325 › 49 Double wall mug 350 ml
- MO2297 › 110 Foldable knife in acacia wood



MO2325



MO2297





Sher matt MO2394

Sherpa lined fleece blanket in RPET polar fleece (180 gr/m²) and polyester sherpa (230 gr/m²). Presented in an RPET nylon carry handle.
Size 120x150 cm **Print technique** Screen printing,T1,TD,TR,E



Icehand MO2328

Quilted ice scraper glove in soft sherpa lining. **Size** 10x38 cm
Print technique Pad printing,DL



Warmix MO7780

Plastic ice scraper with warm protective glove. **Size** 23x17,5 cm
Print technique Screen transfer,TD,TR,DL



Hamaluz MO2357

3 in 1 aluminium torch with emergency hammer and seat belt cutter. It has a COB light on side and front. Including magnet and hand strap. Built-in rechargeable 500mAh battery included. **Size** 16,1x5,8 cm **Print technique** Pad printing,L



Bluz MO2280

Pocket-size Rechargeable COB flash light with carabiner hook in ABS. Emergency light and 3 lighting modes. 1 × 3.7V, 200 mAh Lithium rechargeable battery (included, non-replaceable). **Size** 11x3x1,5 cm **Print technique** Pad printing,DL



Boc MO6702

Multi functional mini portable 400 mAh USB rechargeable aluminium 6W COB flashlight with magnet, carbineer and bottle opener. Luminous flux: 800 lm. 3 lighting modes (high, low and flashing). **Size** 7x4,5x2,1 cm **Print technique** Laser engraving,D01,DL



Haert MO2278

Heart shaped reflector red light in ABS with back clip. Two light modes: bright light / flashing light. Including 2 LR44 replaceable batteries. **Size** 5x5x1,6 cm **Print technique** Pad printing



Fife MO2364

Aluminium foldable knife with carabiner. Blade in stainless steel. The carabiner is not for climbing (non-professional use). **Size** 10x3x1 cm
Print technique Pad printing,L



Skarp MO2297

Stainless steel foldable knife in acacia wooden handle. Blade length: 6 cm. **Size** 9,1x2,4x1,4 cm
Print technique Pad printing,L



Wodycut MO2298

Stainless steel multi tool pocket knife with acacia wooden handle. 7 functions: bottle opener, knife, can opener, file, screwdriver bits, key ring and 1 LED light. 3 button cells included. **Size** 6x3x2 cm
Print technique Pad printing,L,DL,D01



Pulric MO2319

Retractable badge holder in ABS with clip, key ring and bottle opener. **Size** 10x3,5x0,8 cm
Print technique Pad printing,DL,D01



Code MO2395

Key ring with phone stand in walnut wood. **Size** 5,9x1,9x1,x5 cm
Print technique Pad printing,L



Nawkey MO2369

Key ring in walnut and PU. **Size** 11x3x0,4 cm
Print technique Pad printing,L,DL,D01

Wodycut

MO2298





MO2365 › 117

MO2366 › 117

CX1540 › 134

A Seasonal Touch



CX1548 · 133



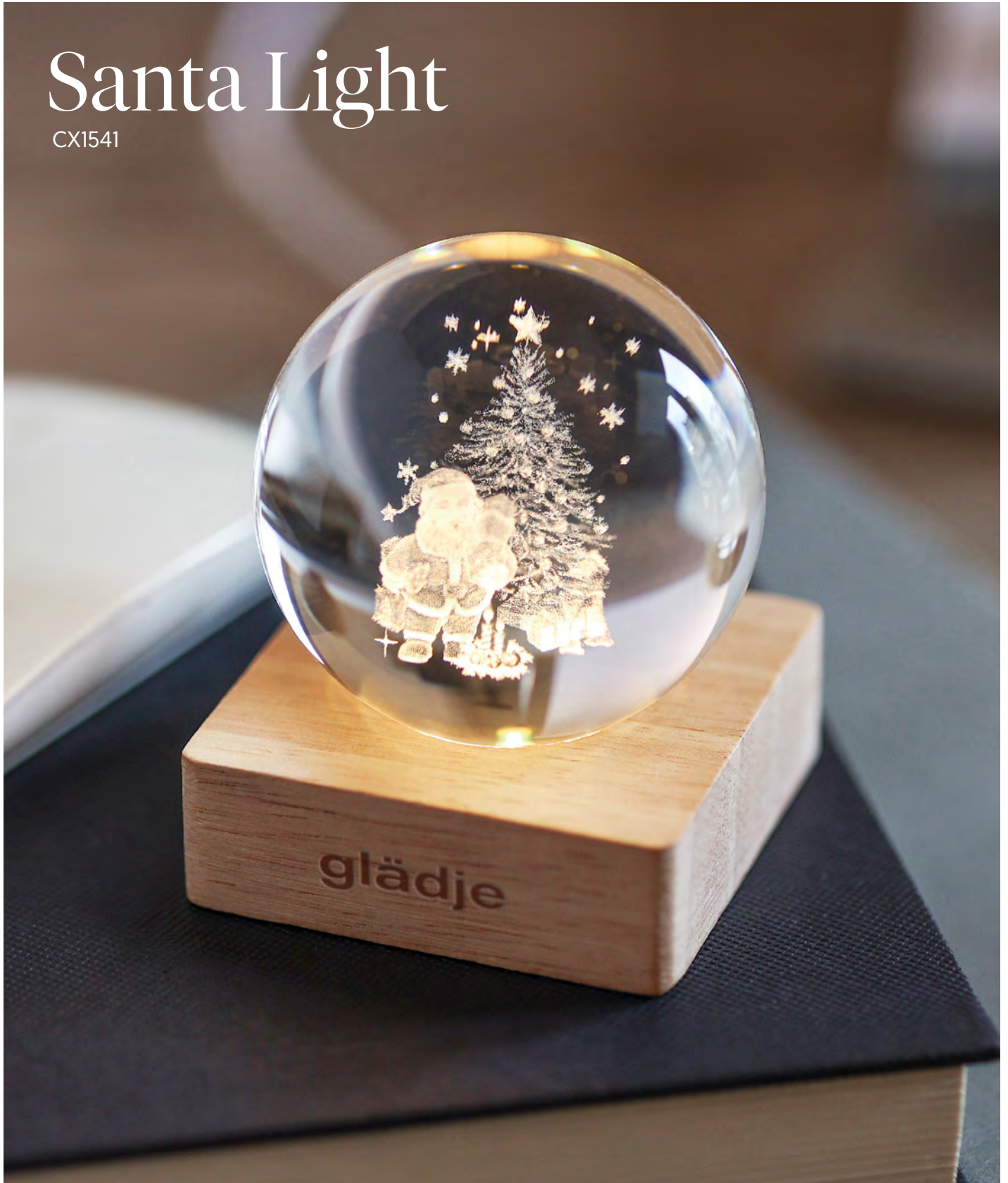
Cozy up this holiday season with our accessories and decorations. Get into the spirit by personalising a wide array of Christmas gifts. With limitless opportunities available, share the joy of the holiday season!



CX1542 · 119

Santa Light

CX1541





Santa Light CX1541



Crystal Christmas ball ornament with LED light (100 lumens) on a rubber wood base. Includes a USB charging cable (90 cm). **Size** 6,1x6x7,5 cm **Print technique** Pad printing,L



40

Milky Way CX1462



String with 20 LED lights in wooden star shape. Presented in carton box. 2 AA batteries not included. On/off button in battery case. **Size** 15x8,2x2,3 cm **Print technique** Pad printing,D01,DL



22

Baubli CX1514

Glass bauble (Ø 8 cm) with string of 8 LED warm yellow lights and jute cord. 2 AA batteries excluded. **Size** Ø8 cm **Print technique** Pad printing



40

Fairy MO6611



String of 50 LED fairy lights in warm yellow light on a wooden spool. Length: 5m. 3 AA batteries not included. **Size** Ø3,5x6,2 cm **Print technique** Pad printing,D01,DL,L



Lumistar CX1361

PVC LED colour changing light in star shape. Mood lights colours: white, blue, purple, red, yellow and green. 3 LR44 batteries included. **Size** 9x4x8,5 cm

Print technique Pad printing

	100	250	500	1000
Price in €	2,30	2,20	2,10	2,00
Printing in 1 colour*	2,50	2,40	2,30	2,10



Lalie CX1531

Wood (80% poplar wood and 20% weed wood) decorated star with 5 LED light and hanging cord. Including 1 CR2032 battery. Wood is a natural product, there may be slight variations in colour and size per item, which can affect the final decoration outcome. **Size** 7,5x7,5x2 cm

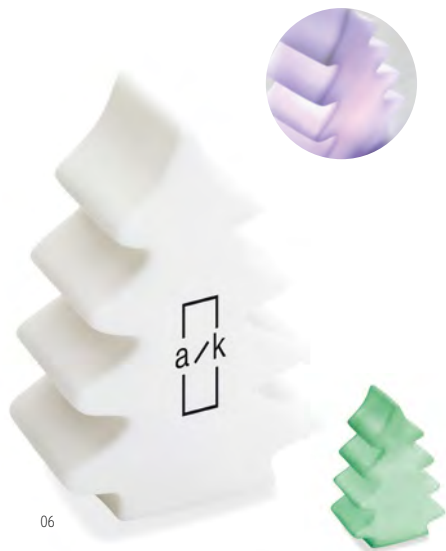
Print technique Laser engraving



Starlight CX1527

MDF decorated star with light inside with Christmas ornaments and hanging cord. Including 3 LR44 batteries. **Size** 10,6x10,6x2,5 cm

Print technique Pad printing, L



Lumitree CX1362

PVC LED colour changing light in tree shape. Mood lights colours: white, blue, purple, red, yellow and green. 3 LR44 batteries included. **Size** 10x4x7 cm

Print technique Pad printing



Lulie CX1530

Wood (80% poplar wood and 20% weed wood) decorated tree with 6 LED light and hanging cord. Including 1 CR2032 battery. Wood is a natural product, there may be slight variations in colour and size per item, which can affect the final decoration outcome. **Size** 8x7,3x2 cm

Print technique Laser engraving



Ponia CX1463

MDF decorated house with light inside with Christmas ornaments and hanging cord. Including 3 AG10 batteries. **Size** 5,5x5,2x8 cm

Print technique Laser engraving

Flamelight LED candles with real wax



MO2366



MO2365



06



Xandle+ MO2366

Real flame-effect LED wax candle in glass holder. 2 AA batteries not included. **Size** Ø7,5 x 10 cm **Print technique** Pad printing,DL



06



Xandle MO2365

Small real flame-effect LED wax candle in glass holder. Including CR2032 battery. **Size** Ø5 x 7,5 cm **Print technique** Pad printing,DL



Lotus CX1481 • 
Star shaped wooden decorative base with vanilla fragranced candle.
Size 10x9,5x6,8 cm **Print technique** Pad printing,L



Pentas MO6282 • 
88gr round shaped wooden decorative base with vanilla fragranced candle.
Size Ø9x6,8 cm **Print technique** Laser engraving,P



Bougie CX1446

Glass candle holder surrounded via ornaments. Presented in a carton and PVC box with ribbon and label. **Size** 6x4 cm **Print technique** Digital label



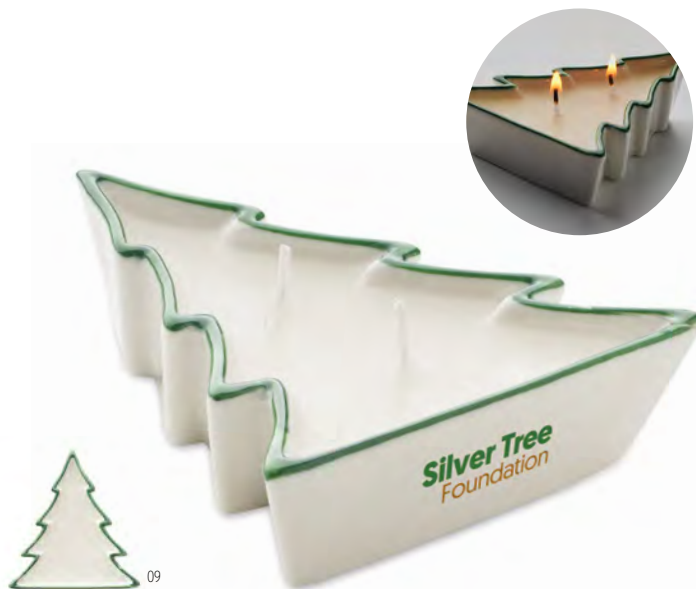
Forest CX1508

Glass candle holder (120 gr) with forest arrangement. Presented in a carton and PVC box with jute cord and kraft label. Candle included. **Size** 10x8,5x8,5 cm **Print technique** Pad printing,DL



Stario CX1370

Star shaped glass tea light candle holder in silver box with transparent cover and decorative ribbon. Tea light included. **Size** 8x7,5x2,5 cm **Print technique** Digital label



Holifir CX1542

Plant based wax candle in a Christmas tree shape porcelain holder with 2 wicks. 60 gr. Burn time: 4 hours. **Size** 10,7x11,3x3 cm **Print technique** Pad printing,DL,D01

Seasonal snow glass ball



CX1544

CX1545



05

Santo CX1544

Small Christmas glass snow ball ornament with polyresin base.
Size 5,5x5,5x6 cm **Print technique** Pad printing,DL,D01



05

Santisimo CX1545

Christmas glass snow ball ornament with polyresin base.
Size 5,5x5,5x8 cm **Print technique** Pad printing,DL,D01



CX1551

l'Opéra



CX1551

CX1552

Jolly Crunch CX1551

Nutcracker character ornament in wood.

Size 7 x 7 x 25,5 cm **Print technique** Pad printing,L

Jolly CX1552

Small nutcracker hanging ornament in wood.

Size 4,5x3,5x13,2 cm **Print technique** Pad printing,L



CX1552

l'Opéra



40

Chriset CX1495



Set of 6 beech wooden Christmas ornaments with jute cord. Designs: baubles, tree, and snowflake shaped hangers. Presented in a kraft box. **Size** 7,6 x 8,5 cm **Print technique** Pad printing,DO1,DL,L



99

Helsinborg CX1349

Set of 6 wooden Christmas tree hangers presented in a cardboard box with clear lid. **Size** 20x5x1 cm **Print technique** Digital label



14

98

05

05

Happy Ball CX1466

Christmas bauble in shiny PP including plate for sublimation print. Diameter 6 cm. **Size** Ø6 cm **Print technique** Sublimation,P,DO1,DL,L



05

Jingle Ball CX1449



5,0 wireless christmas bauble speaker in ABS. Easy connection with any wireless enabled device. Rechargeable Li-ion 300mAh battery. Includes USB charging cable. Output data: 3W and 4 Ohm. Operating range: 10 m. **Size** Ø7 cm **Print technique** Pad printing



05

Rouge CX1335

Set of 6 red felt tree hangers in 6 different designs: tree, snowflake, bell, boot, poinsettia and reindeer. **Size** 6 cm **Print technique** Screen printing,DL,TI,TD,TR



09



40



09



40



Woodtree CX1278

Wooden Christmas tree with 12 assorted tree hanger decorations to be assembled. Individual gift box with transparent cover. **Size** 22x16,5x2 cm **Print technique** Pad printing,S,DL

Silueta CX1510



Plywood silhouette Christmas tree with 10 assorted ornaments. Assembly required. **Size** 16x16x19,8 cm **Print technique** Laser engraving,DOI,DL



40



Arseed CX1555



Wooden tree shaped decoration hanger with jute cord including spruce seeds. Presented in kraft envelope. Made in EU. **Size** Ø6 cm

Print technique Pad printing,L,DL,D01



40



Roseed CX1556



Wooden bauble shaped decoration hanger with jute cord including spruce seeds. Presented in kraft envelope. Made in EU. **Size** Ø6 cm

Print technique Pad printing,L,DL,D01



40



Baly CX1473



Wooden MDF bauble shaped decoration hanger with jute cord. MDF is made from natural materials, there may be slight variations in colour and size per item, which can affect the final decoration outcome. **Size** 8,9xØ6,9x0,2 cm

Print technique Pad printing,S,L



40



Arby CX1475



Wooden tree shaped decoration hanger with jute cord. MDF is made from natural materials, there may be slight variations in colour and size per item, which can affect the final decoration outcome. **Size** 7,9x6,3x0,2 cm

Print technique Pad printing,S,L



40



Neuy CX1474



Wooden snowflake shaped decoration hanger with jute cord. MDF is made from natural materials, there may be slight variations in colour and size per item, which can affect the final decoration outcome. **Size** 7,9x7x0,2 cm

Print technique Pad printing,S,L



06



Bauseed CX1515

Soft wildflower mix seed paper in Christmas ornament bauble shaped with jute rope. After use, plant the paper and watch it grow into a wildflower meadow. Made in EU. **Size** 8x7x0,2 cm

Print technique Pad printing



06



Starseed CX1516

Soft wildflower mix seed paper in Christmas ornament star shaped with jute rope. After use, plant the paper and watch it grow into a wildflower meadow. Made in EU. **Size** 8x8x0,2 cm

Print technique Pad printing



06



Treeseed CX1517

Soft wildflower mix seed paper in Christmas ornament tree shaped with jute rope. After use, plant the paper and watch it grow into a wildflower meadow. Made in EU. **Size** 8x6,5x0,2 cm

Print technique Pad printing



14

Buno CX1472

Circular shaped decorative ornament in stainless steel with ribbon in gift envelope. Easily folds flat for mailing and storage. **Size** 8,9xØ8x0,05 cm **Print technique** Pad printing,DO1,DL,L,S



03

Slatetree CX1433

Slate hanger tree shaped with cord hanger. **Size** 10x8,5x0,4 cm **Print technique** Pad printing,L



03

Slatestar CX1434

Slate hanger star shaped with cord hanger. **Size** 9,5x9,5x0,4 cm **Print technique** Pad printing,L,DL



99

Snowy CX1437

Christmas ball in pearl finish with ribbon hanger. Individual carton gift box in matching design. **Size** 7x7x6,5 cm **Print technique** Pad printing,DL



40

Woostar CX1373

Wooden hanger star shaped with red ribbon. **Size** 9,5x10x0,5 cm **Print technique** Pad printing,S,L



40

Esty CX1476

Wooden MDF star shaped decoration hanger with jute cord. MDF is made from natural materials, there may be slight variations in colour and size per item, which can affect the final decoration outcome. **Size** 7,9x6x0,2 cm **Print technique** Pad printing,S,L



CX1554

MO2101

CX1534

MO1804



05

Bono Rpet CX1525 

Christmas hat made of RPET. **Size** 42x30 cm
Print technique Screen transfer,E,TD,TR



05

Auriga CX1534

Christmas knitted beanie with cuff and bobble in soft stretchable acrylic. **Size** 20x23 cm
Print technique Embroidery




05

Mensa CX1528

Christmas knitted beanie with cuff and bobble in stretchable acrylic. **Size** 20x23 cm
Print technique Embroidery



05

Orion CX1532 

Long Christmas knitted beanie with cuff and bobble in RPET polyester. **Size** 20x50 cm
Print technique Embroidery



05

Bono CX1015

Christmas hat. **Size** 42x30 cm
Print technique Screen transfer,E,TD,TR



05

Nobo CX1013

Christmas boot. **Size** 36x19 cm
Print technique Screen transfer,TD,TR,E



07

05

Canichie MO6573

Pair of cable knit slipper socks with non-slip grippers on the bottom in Acrylic twine and 240 gr/m² faux sherpa lining. Presented in giftbox. **Size** M= 36-39. **Size** 24x24 cm
Print technique Round screen printing ,DL,E



07

05

Canichie L MO6574

Pair of cable knit slipper socks with non-slip grippers on the bottom in Acrylic twine and 240 gr/m² faux sherpa lining. Presented in giftbox. **Size** L= 40-43. **Size** 26x26 cm
Print technique Round screen printing ,DL,E

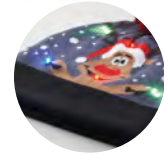
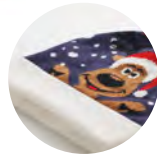




05



04



Shimas Hat CX1529

Christmas knitted beanie with cuff and bobble in soft stretchable acrylic. **Size** 22x21,5 cm **Print technique** Embroidery

Shimas Light CX1539

Christmas knitted beanie with 6 LED light (3 setting lights) with cuff and bobble in soft stretchable acrylic. 1 CR2032 battery included. **Size** 22 x21,5 cm **Print technique** Embroidery



05

08

09

Also available in size Medium (CX1503)



Joyful L CX1504

Pair of seasonal socks in 75% cotton, 23% RPET polyester and 2% spandex. Presented in giftbox. Size L = 43-46. **Size** 24,5x9,5 cm **Print technique** Screen printing,DOI,DL



09



Shimas CX1522

Christmas sweater in Acrylic. **Size:** L/XL **Size** 71x55x64 cm **Print technique** Screen transfer,TD,TR,E

Funny Christmas sweaters



Front

Back

S / M



03

Shamis CX1553

Christmas sweater with 10 LED lights in Acrylic. Size: S/M. Show up at work or at the family Christmas dinner in style with this festive sweater. Removable battery compartment. Included 2 CR2032 batteries. **Size** 67x51x64 cm
Print technique Screen printing

L / XL



03

Shamis Large CX1554

Christmas sweater with 10 LED lights in Acrylic. Size: L/XL. Show up at work or at the family Christmas dinner in style with this festive sweater. Removable battery compartment. Included 2 CR2032 batteries. **Size** 71x55x64 cm
Print technique Screen printing

Custom made Christmas jumpers!

Who designs the ugliest company Christmas jumper?

Delivery time from 6 weeks



100
M00

Unisex



Pretty ugly

The ugliest!

Uglier



CG1020

Custom made knitted Christmas jumper made of 100% acrylic.

Up to 5 colours!





Custom made socks

You design it, we make it! Socks offers a unique product that truly adds the personal touch to marketing campaigns.

Delivery time from 5 weeks

50
MOQ



Premium gift box (upgrade)



Custom Tag (Included)



MWCS21

Custom pattern jaquard socks made from cotton (MWCS21) or bamboo (MWBS21).



05



Copito Set cx1557

Winter gift set including a touch screen knitted tactile gloves with a snowflake pattern and a ceramic mug. Capacity: 300 ml. Presented in a matching box. **Size** 12,2x9,2x9,8 cm
Print technique Round screen printing ,P,DL



05



04



05

Tosti CX1548

190 gr/m² RPET coral fleece blanket with winter pattern. Wrapped in ribbon and printable card. **Size** 150x120 cm **Print technique** Digital inlay,P,S,DL



05



05

Aalborg CX1360

Hot water bottle with jersey in Nordic design. Used to provide warmth, typically whilst in bed, but also for the application of heat to a specific part of the body. 310 ml capacity. **Size** 20x12 cm **Print technique** Pad printing,DL,E,T1,TR



85



05

85

Aarhus CX1543

Hot water bottle with jersey in Christmas pattern. Used to provide warmth, typically whilst in bed, but also for the application of heat to a specific part of the body. 250 ml capacity. **Size** 22,5x12x5 cm **Print technique** Pad printing,T1,TR,E,DL



CX1540



CX1533



99

Hollyware CX1540

Christmas dessert cutlery set including fork and spoon in stainless steel with a 150 gr/m² cotton napkin. Presented in a Christmas stocking shaped pouch. **Size** 8x11,5 cm **Print technique** Screen printing,T1,TD,TR



16

Chip Set CX1533

Set of 4 different stainless steel Christmas motif tea spoons. Presented in giftbox. **Size** 15x15x2,5 cm **Print technique** Pad printing,S,PD



Noel CX1501

Set of 2 Christmas glasses with golden rim. Presented in a gift box. Capacity: 330ml. **Size** 17x11x8,7 cm **Print technique** Pad printing,D01,DL



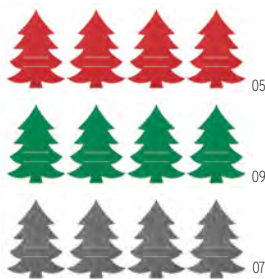
Plata Set MO2321

16 piece stainless steel cutlery set for 4 place settings. Including: tea spoon, table spoon, fork, knife. Presented in a kraft paper box. **Size** 16x5x25 cm **Print technique** Laser engraving,DL



Treesguard CX1479

Set of 4 RPET felt cutlery holders in Christmas tree shape presented in kraft box. **Size** 16x2x21 cm **Print technique** Screen printing,T1,TD,TR,DL



Starguard CX1480

Set of 4 RPET felt coasters in star shape presented in kraft box. **Size** 11x2x11 cm **Print technique** Screen printing,T1,TD,TR,DL





Alto CX1546

Bottle stopper with Christmas design in zinc alloy. **Size** 11,5x4,5x2 cm
Print technique Pad printing,L



Bottle Popper CX1549

Recycled aluminium key ring with bottle opener in reindeer shape.
Size 5,4x5,3x0,3 cm **Print technique** Pad printing,L



Note CX1547

Bottle opener with Christmas design in zinc alloy. **Size** 11,5x4,5x2 cm
Print technique Pad printing,L



Trees CX1536

Cheese knife in zinc alloy in Christmas tree shape. Presented in giftbox.
Size 11x4 cm **Print technique** Laser engraving



Viram CX1502

Tree-shaped bamboo serving platter with three ceramic serving dishes.
Size 30x26,4x4,7 cm **Print technique** Laser engraving



Treechesse CX1477

Tree-shaped bamboo cheeseboard set with knife cheese spreader in stainless steel.
Size 25x22,5x1 cm **Print technique** Laser engraving



Scaglia CX1538

Set of 2 acacia wood pot holder with snowflake design. Wood is a natural product, there may be slight variations in colour and size per item, which can affect the final decoration outcome.
Size 22x1,5 cm **Print technique** Laser engraving



Acaball CX1537

Acacia wood serving board with in Christmas bauble shape with PU cord. Wood is a natural product, there may be slight variations in colour and size per item, which can affect the final decoration outcome.
Size Ø19x26x0,9 cm **Print technique** Laser engraving



Sweet CX1489

Christmas silicone spatula with seasonal design and wooden handle. **Size** 25x5x0,9 cm **Print technique** Pad printing,L



Stampa CX1491

Wooden pastry rolling pin with debossed Christmas pattern. **Size** Ø4x42 cm **Print technique** Laser engraving



Cuqui Set CX1483

Set of 3 cookie cutters in stainless steel with jute cord. Each can be also used as tree ornament. **Size** 10x6,7x2,3 cm **Print technique** Pad printing,S,DL



Santa CX1492

Ceramic mug with Santa Claus decoration and lid. Capacity: 370 ml. **Size** Ø8,5x11,5 cm **Print technique** Pad printing



16



Starfilter CX1435

Loose leaf tea infuser/filter in stainless steel with extended chain and mini plate. **Size** 5x6x1 cm
Print technique Laser engraving,P



99



Unique CX1443

Ceramic mug set including mug, tea filter and mini plate. Presented in carton box with PVC sleeve and cord with label. **Size** 21x15x9,5 cm
Print technique Laser engraving,DL



09



Verde CX1485

Double wall borosilicate mug with seasonal design and silicone lid and coaster. Capacity: 250ml. **Size** Ø9,5x11,7 cm
Print technique Round screen printing ,P



99



Claus CX1304

Ceramic mug 250ml with integrated spoon with Santa Claus decoration. Individual matching design gift box. **Size** Ø8x10 cm **Print technique** Pad printing,TC,DL



22



Sian CX1524

Double wall borosilicate mug with tree design and bamboo lid. Capacity: 220 ml. **Size** 11x10,7x11 cm
Print technique Pad printing,DO1,DL,L



22



Sion CX1523

Double wall borosilicate mug with stars design and bamboo lid. Capacity: 220 ml. **Size** 11x10,7x11 cm
Print technique Pad printing,DO1,DL,L



00



Pazuru CX1507

Christmas puzzle in tin box. 60 pieces. **Size** 13x8x4 cm
Print technique Pad printing,DO1,DL,L



40



Funcool CX1535

Set of 3 wooden Christmas ornaments with 4 colouring pencils. Presented in a kraft box. Wood is a natural product, there may be slight variations in colour and size per item, which can affect the final decoration outcome. **Size** 9x9 cm
Print technique Pad printing,DL

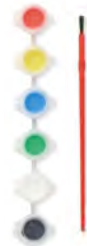


13



Stampie CX1512

Set of 8 wooden Christmas stamps and multicoloured stamp inkpad with 4 different colours. Presented in a cotton drawcord bag. **Size** 14,7x20,5 cm
Print technique Screen printing,T1,TD,TR,DO1,DL



40

Tree And Paint CX1493

DIY wooden silhouette Christmas tree with 6 water colours and paint brush. Assembly required. **Size** 29,7x24,8 cm **Print technique** Pad printing,DO1,DL,L



13



Rubbies CX1526

Set of 4 different Christmas erasers: snowflake, Santa, Christmas tree and snowman. Presented in cotton drawcord bag. **Size** 8x8 cm
Print technique Screen printing,T1,TD,TR



40

Boxmas CX1478



Wooden Christmas hand wind music box. Song We wish you a Merry Christmas. No batteries required. **Size** 8,5x5x4,5 cm **Print technique** Pad printing,L



05



Dwarf CX1482

Felt Christmas decorative dwarf with cotton filling. **Size** 20,5x10x30,5 cm
Print technique Screen transfer,TD,TR



06



05



Rudolph CX1469

Soft plush reindeer with removable hooded sweater **Size** 15,5x12 cm
Print technique Sublimation,T1,TD,TR



Woohouse MO8532



Build your own wooden bird house. Made of MDF. **Size** 17,5x12x3,4 cm
Print technique Pad printing,D01,DL,L,PD

40

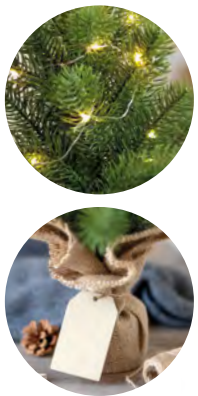


Greenjay MO2358



Bird house in plywood. **Size** 11x23x10 cm **Print technique** Laser engraving,DL,D01

06



09

Aveto cx1511

Mini artificial (PE) Christmas tree with 20 LED warm yellow string lights on a jute base. Comes with a wooden gift tag. 2 AA batteries excluded.
Size 42x28x28 cm **Print technique** Pad printing,D01,DL,L



Growtree™ MO6228

Give a tree back to the earth. Including pine seeds (pinus nigra) which gives a new life to the planet. The tree will grow approx. 30 cm per year. Made in EU.
Size 7x6,5x13 cm **Print technique** Pad printing,D01,DL,L

13

Greenjay

MO2658



Viveka Colour

MO2302



MO2302

B

CX1481



The essential 140gsm tote bag in recycled fabrics

Get ready for hassle-free Christmas shopping with this essential Tote bag. Perfect for your daily grocery runs, this bag is produced in recycled cotton with rpet and has long handles for easy carrying. The ideal take-along accessory for all your holiday errands.



- A Recycled cotton and RPET 140 gsm
- B 38 cm x 42 cm
- C Handle width 2,5 cm
- D Available in 11 colours

More details on page > 146



60

13



Viveka Colour MO2302 

Recycled pre-consumer cotton shopping bag (70% recycled cotton and 30% RPET) with long handles. 140 gr/m².
Size 38x42 cm **Print technique** Screen printing,T1,TR,E,TD



13

Viveka MO2301 

Recycled pre-consumer cotton shopping bag (70% recycled cotton and 30% RPET) with long handles. 140 gr/m².
Size 38x42 cm **Print technique** Screen printing,T1,TR,E,TD

Most popular tote bag in 140 & 180 gr/m² available in 18 colours



*Also available in natural colour: M09267-13

Cottonel Colour + M09268 ● 140gr

Cotton shopping bag with long handles. 140 gr/m².
Size 38x42 cm **Print technique** Screen printing,T1,TR,E,TD

*Also available in natural colour: M09845-13

Cottonel Colour ++ M09846 ● 180gr

Cotton shopping bag with long handles. 180 gr/m².
Size 38x42 cm **Print technique** Screen printing,T1,TR,TD,E



* Available in size small M06634 and large size M06636

Amber Medium M06635

Medium gift draw cord bag in organic cotton.
Size approx. 25 x 32 cm. 105 gr/m². **Size** 25x32 cm
Print technique Screen printing,T1,TD,TR



M06634

M06635

M06636

13



* Available 13 in size small M09728 and large size M09732

* Available 03 in size small M09729, medium size M09731 and large size M09733

Taske Medium M09730

Medium gift cotton draw cord bag.
Size approx. 25 x 32cm. 105 gr/m². **Size** 25x32 cm
Print technique Screen printing,T1,TD,TR



M09728

M09730

M097312

13



MO2147



Chisai MO2147

Small cotton gift or goodie bag with short handles. 140 gr/m². **Size** 17x22 cm
Print technique Screen printing, T1, TD, TR



MO9928

MO9929

MO9930



* Available in size small MO9928 and big size MO9930

Jute Medium MO9929

Medium gift jute draw cord bag.
 Size approx. 25 x 32cm. **Size** 25x32 cm
Print technique Screen transfer, TD, TR



Sparkle CX1497

Elegant gift kraft paper bag with seasonal pattern.
 Gift tag included. 250 gr/m². **Size** 25x11x32 cm
Print technique Screen printing,DL



* Also available in size small (CX1413) and large (CX1415)

Bossa Medium CX1414

Elegant gift paper bag with snowflakes pattern.
 Gift tag included. Medium size. **Size** 22x11x30 cm
Print technique Pad printing,S,DL



* Also available in size small (CX1518) and large (CX1520)

Bao Medium CX1519

Christmas medium gift paper bag (50% recycled)
 bag. 90 gr/m². Made in EU. **Size** 25x11x32 cm
Print technique Screen printing,T1,DL,TD,TR





MO8807

MO8808

MO8809



* Available in size small MO8807 and large size MO8809

Paper Medium MO8808

Medium Gift paper bag. 150 gr/m². **Size** 22x11x30 cm
Print technique Screen printing,DL,T1,TD,TR



MO6172

MO6173

MO6174

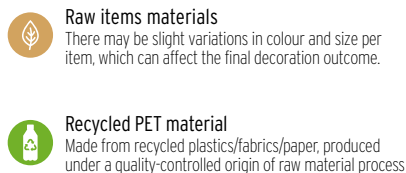
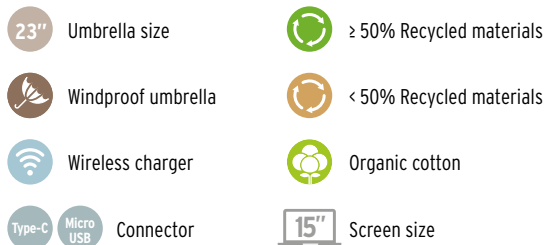


* Available in size small MO6172 and big size MO6174

Paper Tone M MO6173

Medium Gift paper (50% recycled) bag. 90 gr/m². Made in EU. **Size** 25x11x32 cm
Print technique Screen printing,DL,T1,TD,TR

General Pictograms



YourChoice



Colour Codes

00 Mix Colour	13 Beige	38 Fuchsia	70 Neon Yellow	AS Ash	CY Creamy Blue	GO Gold	NO Neon Orange
02 Burgundy	14 Silver	39 Khaki	77 Mint Green	BK Burgundy	DA Dark Purple	GY Grey Melange 2	NY Navy
03 Black	15 Stone Grey	40 Wood	85 French Navy	BG Black	DB Deep Black	HX Heather Oxblood	OR Orange
04 Blue	16 Matt Silver	41 Chocolate	90 Copper	BL Blue	DC Dark Chocolate	KG Kelly Green	OX Oxblood
05 Red	18 Titanium	42 Earth	95 Beige/Red	BO Bottle Green	DK Dark Khaki	LL Lilac	PA Astral Purple
06 White	20 Petrol	43 Off White	98 Gold	BP Pool Blue	EO Spring Green	LM Lime	PO Pop Orange
07 Grey	22 Transparent	48 Lime	99 Multicolour	BT Bright Red	FG Forest Green	LY Light Yellow	RB Royal Blue
08 Yellow	27 Transparent Grey	49 Army Green	AA Arctic Blue	CE Charcoal Melange	FI Fir Green	MG Metal Grey	RD Red
09 Green	33 White/Black	60 Dark Green	AG Apple Green	CI Creamy Green	FN French Navy	MU Mouse Grey	RO Rope
10 Orange	34 White/Grey	65 Rope	AQ Aqua	CP Creamy Pink	GM Grey Melange	NE Neon Yellow	WH White
12 Turquoise	37 Royal Blue	66 Baby Blue	AR Army	CR Charcoal Grey	GN Frozen Green	NL Neon Lime	

Numerical Product Index

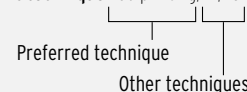
Reference	Page	CX1502	137	CX1555	124	M02305	21	M02360	25	M06560	31
CX1013	127	CX1504	128	CX1556	124	M02306	66	M02361	25	M06561	31
CX1015	127	CX1507	140	CX1557	132	M02307	66	M02363	71	M06573	127
CX1278	123	CX1508	119	M02061	101	M02308	43	M02364	110	M06574	127
CX1304	139	CX1510	123	M02101	59	M02309	29	M02365	117	M06611	115
CX1335	122	CX1511	142	M02102	59	M02310	51	M02366	117	M06635	148
CX1349	122	CX1512	140	M02147	149	M02311	51	M02369	110	M06645	80
CX1360	133	CX1514	115	M02150	13	M02312	43	M02370	101	M06667	79
CX1361	116	CX1515	124	M02169	75	M02313	63	M02371	30	M06702	109
CX1362	116	CX1516	124	M02170	72	M02314	44	M02372	70	M06750	46
CX1370	119	CX1517	124	M02234	45	M02315	37	M02373	18	M06804	105
CX1373	125	CX1519	150	M02263	71	M02316	37	M02374	11	M06847	9
CX1414	150	CX1522	128	M02264	75	M02317	37	M02375	11	M06855	53
CX1433	125	CX1523	139	M02268	71	M02318	20	M02376	102	M06866	52
CX1434	125	CX1524	139	M02270	17	M02319	110	M02377	102	M06935	55
CX1435	139	CX1525	127	M02271	17	M02320	61	M02378	7	M06986	101
CX1437	125	CX1526	141	M02272	32	M02321	135	M02379	102	M07780	108
CX1443	139	CX1527	116	M02275	17	M02322	48	M02380	30	M08040	59
CX1446	119	CX1528	127	M02277	17	M02323	49	M02381	61	M08422	59
CX1449	122	CX1529	128	M02278	109	M02325	49	M02382	105	M08532	142
CX1462	115	CX1530	116	M02279	10	M02326	49	M02383	39	M08561	80
CX1463	116	CX1531	116	M02280	109	M02328	108	M02385	56	M08808	151
CX1466	122	CX1532	127	M02281	8	M02329	55	M02386	56	M09088	105
CX1469	141	CX1533	134	M02282	23	M02330	55	M02388	23	M09089	105
CX1472	125	CX1534	127	M02283	45	M02331	40	M02389	12	M09178	18
CX1473	124	CX1535	140	M02284	18	M02332	27	M02390	28	M09242	56
CX1474	124	CX1536	136	M02285	29	M02333	27	M02391	67	M09268	147
CX1475	124	CX1537	137	M02286	75	M02334	27	M02392	70	M09451	59
CX1476	125	CX1538	137	M02287	75	M02335	27	M02393	61	M09730	148
CX1477	137	CX1539	128	M02288	63	M02336	45	M02394	108	M09815	102
CX1478	141	CX1540	134	M02289	33	M02338	79	M02395	110	M09846	147
CX1479	135	CX1541	115	M02290	53	M02339	23	M02396	33	M09929	149
CX1480	135	CX1542	119	M02291	60	M02340	11	M02398	39	M09965	79
CX1481	118	CX1543	133	M02292	56	M02341	18	M02399	78		
CX1482	141	CX1544	120	M02293	62	M02342	11	M02400	66		
CX1483	138	CX1545	120	M02294	13	M02343	47	M02401	72		
CX1485	139	CX1546	136	M02295	13	M02344	47	M02402	72		
CX1489	138	CX1547	136	M02296	63	M02352	63	M06173	151		
CX1491	138	CX1548	133	M02297	110	M02353	33	M06228	142		
CX1492	138	CX1549	136	M02298	110	M02354	25	M06281	100		
CX1493	140	CX1551	121	M02299	7	M02356	62	M06282	118		
CX1495	122	CX1552	121	M02300	20	M02357	109	M06316	100		
CX1497	150	CX1553	129	M02301	146	M02358	142	M06323	59		
CX1501	135	CX1554	129	M02302	146	M02359	78	M06550	72		

Printing Information

Tuono M02378

4-in-1 wireless 15W charging 5W speaker in ABS with weather station and ambient light. Alarm clock. Time and temperature display. Built-in Li-Ion battery: 1200 mAh. Playing time approx. 7 hours. **Size** 20x9,8x6,4 cm

Print technique Pad printing, DL, D01



Printing Techniques

Having your logo printed with the widest range of printing techniques has never been so easy. These are the main techniques used to print your logo.

Print Codes

L Laser engraving	E Embroidery
P Pad Print	PD Digital printing
S Screen Printing	DL Digital Label
TI Transfer screen	DI Digital Inlay
TD Transfer digital	TS Dye Sublimation
TC Transfer Ceramic	BP Button print
DO Doming	RS Roundscreen
B Embossing	

We reserve the right to change without notice the print codes, print sizes and/or print colours mentioned in this catalogue.



B



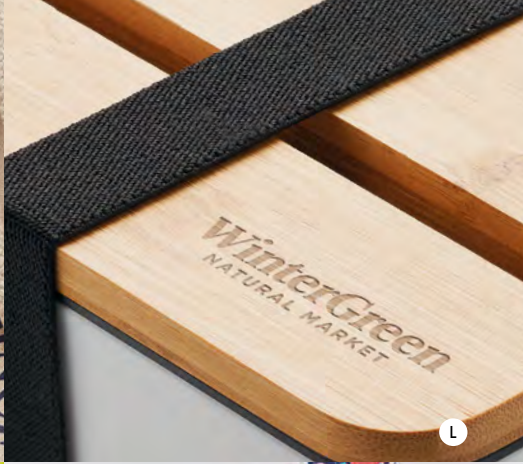
P



E



S



L



L



TC



PD



PD



TI



TD



TS

More than Gifts

End of Year Experience / 2024

